

# AAADA ANTIQUES & ART FAIR MELBOURNE



2020  
VIRTUAL  
FAIR  
CATALOGUE

ART-DESIGN-LIVING  
[aaada.org.au](http://aaada.org.au)

**AA&ADA**  
Buying with Confidence

# WELCOME TO OUR FIRST VIRTUAL CATALOGUE

Dear AAADA supporters,

This is an exciting new initiative by the Australian Antique and Art Dealers Association following the delay in presenting Melbourne's prestigious antique fair at its traditional home, the Malvern Town Hall.

By reinstating a fair catalogue it not only captures the excitement and anticipation of a great antique fair but also gives immediacy to the contents. New technology gives clients and members of the AAADA the opportunity to update treasures offered, on an almost daily basis. All items are for sale, prices are \$AUD and include GST. You can easily deal directly with the relevant dealer as their various contact details are included on their page.

Without doubt this offering includes items of terrific quality and rarity, many sourced before the world wide lockdown and kept under wraps for the Melbourne Fair. Indeed, the demand for quality antiques, worldwide, is now growing and the realisation that handmade unique pieces with history give confidence and stability in our life, is a growing phenomenon.

The standard of offering by AAADA members in this first digital catalogue will give readers a taste of what can be found on the Associations permanent "Items for Sale" section of its web site: [www.aaada.org.au](http://www.aaada.org.au) Buying from AAADA members comes with no extra commission costs but more importantly, comes with guarantees of authenticity supported by members who Governments, connoisseurs and collectors go to for advice.

We hope you enjoy this new initiative and trust you find the offering enticing and know it will be worthwhile filing for future reference.

Andrew Simpson  
President

**The Australian Antique & Art Dealers Association**

PO Box 294 | Apollo Bay VIC 3233

T: 0498 059 661 | E: [keren@aaada.org.au](mailto:keren@aaada.org.au) | [www.aaada.org.au](http://www.aaada.org.au)

Find us on Facebook & Instagram



# CONTENTS

<b>4-5</b>	Alan Landis Antiques
<b>6-7</b>	Antique & Unique Jewels
<b>8-9</b>	Antique Print Map Room
<b>10-11</b>	Brans Antiques & Art
<b>12-13</b>	Chineur Antiques
<b>14-15</b>	Douglas Stewart Fine Books P/L
<b>16-17</b>	Edward Clark Antiques
<b>18-19</b>	Grafton Galleries
<b>20-21</b>	Grange Antiques
<b>22-23</b>	Greene & Greene Antiques
<b>24-25</b>	J.B. Hawkins Antiques
<b>26-27</b>	Lafite Fine Silver
<b>28-29</b>	Lauder & Howard Antiques
<b>30-31</b>	Leven Antiques
<b>32-33</b>	Moorabool Antique Galleries
<b>34-35</b>	Page Antiques
<b>36-37</b>	Pentimento P/L
<b>38-39</b>	Rutherford
<b>40-41</b>	Simpson's Antiques
<b>42-43</b>	Snook & Company Antique Dealers
<b>44-45</b>	The Antique Guild
<b>46-47</b>	The Find Antiques
<b>48-49</b>	The Woodshed Antiques
<b>50-51</b>	Wallrocks
<b>52-53</b>	Westbury Antiques
<b>54</b>	AAADA Code of Practice Additional information

Cover image: The Find Antiques QLD (p46)

# Alan Landis Antiques

Alan Landis Antiques, established in 1977, is one of Australia's foremost authorities on English Ceramics (1750-1950) and Australian Decorative Arts, with expertise in Meissen, Australian and Judaica.

Alan Landis is a Life Fellow of the Powerhouse Museum, Honorary Curator to the National Trust of NSW and advisor to the Historic Houses Trust and Australiana Fund. Alan has delivered lectures to the Wedgwood International Seminar in the USA and has published numerous original articles for local and international magazines. He is an ADFAS lecturer and has organised frequent Valuation Days for the National Trust, the Red Cross and the Salvation Army. As a registered valuer under the Cultural Gifts Program, Alan has valued the contents of Vaucluse House, Elizabeth Bay House, Rouse Hill, and the Sydney Town Hall collections. He is a Past President of the Antique Dealers Association of NSW, the Wedgwood Society of NSW, Vice-President of the Ceramic Collectors Society, as well as a past committee member of the Australiana Society.



Alan Landis  
Judy Landis  
M: 0414 703 759  
Shop 6,  
Potts Point Galleries  
67 Macleay St  
Potts Point NSW 2011  
alanlandis@gmail.com  
www.alanlandisantiques.com



Rare Wedgwood Imperial Queensware reticulated basket dated 1900 length 22cm, height 15cm (one of a pair). **\$2,750**



Very rare pair Sterling Silver 'Havana' shape candlesticks (limited edition of 12) London 1995, maker and signed Asprey. Height 28cm. **\$6,500**





Minton Celadon glaze Parian body Centrepiece dated 1865 length 25cm, height 20cm. **\$1,900**



Forrester Pottery, large Pearlware Jug, 1860, height 35cm. **\$1,750**



Rare Elkington Electrotpe large Oval Plaque, scene from Aesop's Fables, 1870, 70cm x 65cm. **\$1,800**

# Antique & Unique Jewels

Since 2004 Leigh has been sourcing beautiful Georgian, Victorian, Edwardian, Art Deco & Collectable Jewellery from all over the world. Regular trips abroad to London, Paris, Dublin, New York, Istanbul have resulted in being able to find those unique, enticing and very individual bespoke pieces that have been much appreciated by clients for their individuality & Provenance. Pieces indeed that buyers will treasure for life.

In the past few years high quality modern Jewellery has been added to the fine collection, meeting now the requirements of clients seeking either genuine antique pieces or the latest, most modern bespoke items. Exquisite diamond jewellery either antique or modern is always commented favourably upon & is complemented by all other precious gemstones in a wide variety of interesting styles. One can find in the collection earrings, rings, necklaces & pendants, enhancers, bracelets, bangles, fobs & brooches. Indeed something for everyone!



Leigh Enever  
Brian Enever  
T: 0419 149 743  
l.se@bigpond.com  
www.antiqueanduniquejewels.com

By appointment only

Private Showings as  
requested in private homes



**22Ct Yellow Gold Antique Diamond Earrings**  
These beautiful Victorian long drop earrings feature 6 rose cut diamonds, colour H-J, and are gypsy set with illusion claws. The length is 55mm X 17mm with shepherd's hook closures, c. 1870. **\$3,390**



**Bakelite, Emerald, Pink Sapphire & Diamond Bangle.**  
7 bluish-green emeralds are the feature in this pretty, highly sought after bakelite bangle. Adorning the emeralds are 2 cabochon cut pink sapphires and finished with an oval rim of 124 round brilliant cut diamonds, c. 1925 **\$3,690**





Antique Turquoise & Ruby lizard brooch.  
This gorgeous Lizard Brooch is studded with 18 round cabochon cut deep mid blue turquoise, measurement 1.8 to 3.3mm in diameter. It features 2 round cut rubies for eyes of a vivid pinkish red in colour. Total weight of the Brooch is 5.36gms, c. 1885. **\$1,290**



Antique Coral pendant/Photo Locket in Rose Gold & Sterling Silver  
This 14ct coral oval plaque, measures 40mm X 27mm. The colour is a very attractive light pink & features a 5.05 hematite bead nestling on 116 white/silver seed pearls & 9 cabochon turquoise as its centrepiece. It also features a concealed rear photo locket compartment, c. 1870. **\$2,890**



18ct Yellow & White Gold Aquamarine & Diamond Cocktail Ring.  
The 15 carat, eye-clear, colour medium light blue, emerald cut aquamarine stone is flanked by 8 round good quality brilliant cut diamonds totalling 0.85 Carat in weight. The yellow gold band is polished, tapered & upswept to a decorative under-rail, c. 1950. **\$7,950**

# Antique Print Map Room

Very large stock of antique prints, maps, paintings, and photographs of Australia, Pacific, South East Asia, World.

Reference books. Regular catalogues issued.

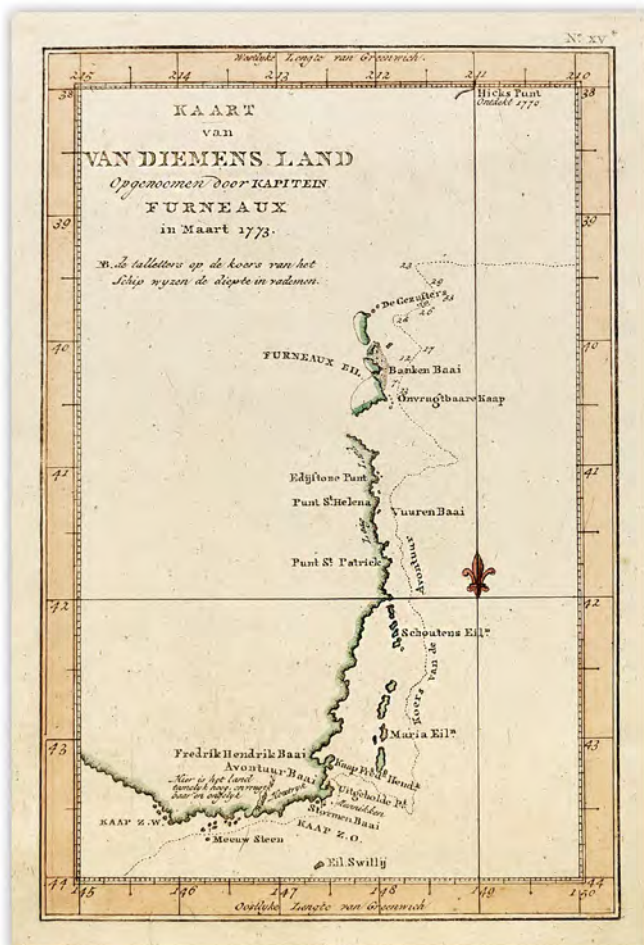
Weekly recent acquisition lists emailed to client base.

We are always wanting to buy single items or collections.



Louis Kissajukian  
Susie Kissajukian  
T: +61 02 9267 4355  
Shop 189, 392 Jones St  
(5 minutes from  
Powerhouse Museum)  
Ultimo NSW 2007  
info@antiqueprintmaproom.com  
www.antiqueprintmaproom.com

Open: Mon-Fri 9am-5pm,  
Sat 11am-3pm, Sun Closed



Captain Tobias Furneaux (1735 - 1781)  
Sketch of Van Diemen Land, explored by Captn. Furneaux in March 1773. First edition of the earliest British chart of Van Diemen's land by Tobias Furneaux, from the account of Cook's second voyage. Hand coloured copper engraving. In good condition, c. 1777 (265mm x 200mm). **\$875**



William Hodges (1744-1797) Captain James Cook F.R.S.  
Famous scarce portrait of Cook from the official British Admiralty sanctioned edition of the accounts of Cook's second voyage. All other later copies made of this image by other publishers were unauthorised, usually smaller and inferior in quality. Copper engraving. In good condition, c. 1777 (265mm x 200mm). **\$850**





Nicholas Vallard c. 1547 (1856)

First map of Australia from Nicholas Vallard's atlas, 1547, in the Library of Sir Thomas Phillipps, Bart. at Middle Hill, 1856.

This beautiful map of Jave la Grande, published in 1856, is based on a chart by Nicholas Vallard from his 1547 manuscript atlas produced in Dieppe, France between 1540 and 1570. Colour printed lithograph in good condition. (380mm x 560mm). **\$2,850**



Franz Anton Schraembl (1751 - 1803)

Karte von Scotland / Verfasst von Herrn J. Dorret

Scarce large scale c.18th map of Scotland by Franz Anton Schraembl (1751-1803) with an inset of the Orkney and Shetland Islands at top right and with an elaborate title panel at lower left. Hand coloured copper engraving in good condition, c. 1789. (555mm x 515mm). **\$650**



Louis Gerard Scotin (1698 - 1755)

[Fencing with sabres] Rare early c.18th engraving of two men fencing with sabres by Louis Gerard Scotin, published by James Miller and dedicated to the Duke of Montagu. Hand coloured copper engraving. In good condition, c. 1738 (320mm x 397mm). **\$550**



# Brans Antiques & Art

Fine quality furniture, sculpture and works of art from the ancient to the 20th century - English, European and Oriental.

Specialising in English and European furniture from the 17th and 18th centuries, classical sculpture, Japanese works of art, Chinese porcelain.

## BRANS



John Brans  
M: 0412 385 555  
30-34 Glyde Street  
Mosman Park WA 6012  
[john@bransantiques.com](mailto:john@bransantiques.com)  
[www.bransantiques.com](http://www.bransantiques.com)

By appointment only



A good quality late 19th century Chinese carved and joined hardwood open-shelf display cabinet of simulated bamboo design and having a pair of carved opening doors below the asymmetrical shelf layout, c. 1900. (80cm wide x 32cm deep x 141cm high). **\$7,800**



A late 19th century Neapolitan bronze bust of Antinous, probably cast by Chiurazzi, after the antique. Very well modelled and cast and with a wonderful Pompeian type patina to imitate an ancient bronze. The ringlets at the ends of his hair in full relief. Mounted on what is probably the original grey veined square marble socle. What appears to be another cast of the same bronze is held in the Yale University Art Gallery. Naples, c. 1880. 25.5cm high including plinth. **\$6,900**



An early 19th century Italian bronze lion, after the marble version carved circa 1594 by Flaminio Vacca for the Medici Villa in Rome, itself a companion to the Ancient Roman version in the Medici collection from the 1st or 2nd century AD. This particular example very well modelled and with a beautiful patina including traces of the original lacquer and a lovely strong presence, c. 1820.

33cm long (34cm with plinth) 21.5cm high (38.5cm with plinth) 11.5cm deep (15cm with plinth). **\$14,800.**



A 17th century Italian walnut cassettone with a moulded-edged, well patinated rectangular top above a chip carved dental frieze. The three long drawers with relief carved moulded drawer fronts and standing on large forward facing plinth-type feet with central fleurs-de-lis carved motif. With early cast bronze handles and escutcheons and a good overall patina. Bologna, c. 1650. (149cm wide (131cm at the waist) x 60.5cm deep x 98cm high). **\$18,500**



A superb quality tall slender Koransha porcelain vase decorated in underglaze blue with two extraordinarily finely painted five-clawed dragons. Japan, Meiji period. Signed beneath and in perfect condition, c. 1900. (44cm high x 22cm diameter). **\$14,000**



# Chineur Antiques

Specialising in Charles Schneider glass, sewing & knitting implements, craquelle, Royal Copenhagen porcelain & curiosities.



Ann Christensen  
Jennifer Murrowood  
M: 0407 880 554  
P O Box 467  
Kew VIC 3101  
info@chineurantiques.co.au  
www.chineurantiques.com.au

By appointment only



Le Verre Français 'Pierrot' Vase  
A French glass vase by Charles Schneider with an acid-etched geometric pattern on pale blue over a mottled orange base. The pattern leads down to a speckled green foot. Signed with the 'berlingot' in the base, c. 1919-1921. This pattern's name was unknown in the Le Verre Français 'line, prior to the release of the latest edition of 'Charles Schneider Le Verre Français – Charder' 2020 by Marie-Christine Joulin and Gerold Maier. The Pierrot pattern can be seen on page 73 in the new book.  
**\$6,475**



**White Craquelé Marabout**  
A French white craquelé Marabout designed by Albert David, manufactured by the Sainte Radegonde factory and produced for Primavera, the art workshop of the department store Le Printemps in Paris, c. 1920's.  
**\$4,495**



**Beadwork Puzzle Picture 'Napoleon's Ghost'**  
A European beadwork picture showing the ghostly figure of Napoleon hidden between the trees and overlooking his own grave. The scene is set within a Greek key line and scrolled border. Dating to around 1840, the beadwork is set in an oak frame, c. 1840- 1850.  
**\$1,300**



**Memorial Miniature 'To Virtue'**  
A European watercolour memorial miniature on ivory with a convex verre églomisé mount painted in white, gold and black. Housed in the original alabaster frame, this memorial portrays a déshabillé angel in a garden landscape placing a garland of flowers on an obelisk upon which is inscribed 'To Virtue', c. 1770-1790. **\$900**



**Snuff Mull**  
A Scottish sheep horn snuff mull in the form of an elephant head with bone tusks. Silver collar is engraved with date 1822, Glasgow and who it is from and to whom it is for.  
**\$2,995**



# Douglas Stewart Fine Books Pty Ltd

Specialising in rare books, maps & globes, historical ephemera, photographs, Australian art and antique children's games. Every month we publish a new email catalogue - sign up via our website. Member of the major international associations in our trade.

**DOUGLAS  
STEWART  
FINE BOOKS**

Douglas Stewart  
T: 03 9066 0200  
720 High Street  
Armadale VIC 3143  
info@douglasstewart.com.au  
www.douglasstewart.com.au

Open: Mon-Fri 10am - 6pm  
Sat 10am-4pm  
Closed public holidays



Robert JACKS (Australia, 1943 - 2014). Birdwoman (1958). Oil on plywood, 494 × 290 mm; signed & dated. One of Jacks' earliest known works. Illustrated in McGregor & Zimmer (2008). **\$14,000**



Russell DRYSDALE (Australia, 1912-1981). Original pen and ink study of a woman and child. Early 1950s. Ex Sir Keith Murdoch Collection. **\$7,500**





Jeff KOONS (USA, 1955 - ) Balloon Rabbit; Balloon Monkey; Balloon Swan. (Limoges: Bernardaud, 2017). Complete set of porcelain multiples. Edition of 999 copies. **\$105,000**



Merchant shipper's globe. (London: Philips & Son, c. 1925). 18-inch diameter floor globe, with original stand. **\$22,500**



Late 18th century set of Shakespeare's plays (London, 1785). Complete in 10 volumes, in original calf bindings. **\$4,250**

# Edward Clark Antiques

Edward Clark Antiques commenced in business on Armadale's High Street, Victoria, 50 years ago.

Many shops in Melbourne, the seaside, countryside and even Sydney followed. Ed has made regular buying trips to Europe, the UK and India.

The highlight of his career was in 1973, when he purchased contents of the Mysore Palace, India, dealing directly with the Maharaja of Mysore.

He also purchased the contents of the Polo Club, an extensive library, magnificent Venetian chandeliers and 17 horse drawn vehicles including a State coach, and contents of the palace stables.

The Melbourne sale of the Palace contents in 1974 filled the Malvern Town Hall and supper room, and at the time was the largest shipment of antiques auctioned in Melbourne by Leonard Joel.

Ed continues to import fine antiques and things he loves with regular shipments from France and Italy. He retains a passion for Indian colonial furniture and early Australian colonial silver.



Edward Clark Antiques  
0408 313 497  
913 High Street  
Armadale  
Vic 3143  
email: edclarkantiques@gmail.com

Open: 10-5 Mon-Sat  
By appointment or by chance



Murano circular Italian glass hanging lantern  
A Murano Italian glass hanging light, with moulded gold glass fern like ribbed panels, surrounding a circular central gilded column, c. 1950. \$7,500



Murano hanging grape with etruscan marble bowl  
Murano six arm coloured glass grape decorated ceiling light with ormolu and polychrome frame, c. 1950, \$6,500; with early etruscan marble bowl, 1900. \$1,750





Italian Walnut Commode

Wonderful, late 18th century Italian Commode in walnut, with faded patina. Finely carved front and sides, 1780. **\$12,500**



Pair of Murano vases with aqua swirls

A pair of Murano studio glass vases with gilded wash finish, and aqua swirl overlay. signed by Constantini, c. 1950. **\$4,500**



# Grafton Galleries

The business was founded in 1945 by former WWI nurse Elsie Cook. Her son, Peter Cook, after a career in the Army, joined Elsie in 1959. He wrote two books on antiques, was a long standing author of a column in the Women's Weekly and was a panellist on the ABC show "For Love or Money". Hartley Cook is now the third generation dealer in the business.

Quality English, European and Asian furniture, silver, glass, ceramics, paintings and decorative items.



Hartley Cook  
T: 02 9361 3567  
M: 0417 200 441  
Shop 1/15 Boundary Street  
Rushcutters Bay NSW 2011  
hartley@graftongalleries.com.au

Open: Monday-Friday,  
10.00-5.00



Louis Philippe walnut commode, c. 1840. **\$4,250**  
Pair of Burmese carved teal figures on lotus pedestals, probably gong supports, c. 1820. **\$5,350 pair**  
Diorama- Thalatta, c. 1860. **\$2,950**



Wax head of baby Jesus, southern Germany, c. 1700, some damage to back of neck.  
Height: 19 cm. **\$2,450**



A rare 18th century Irish Cuban mahogany window seat, c. 1770.  
Ex Hordern Family collection.  
**\$8,500**



A selection of Georgian candlesticks, c. 1730-1810.  
**\$1,100- \$2,500 pair**



Pair of Chinese yellow ground vases decorated with dragons, c. 1910.  
**\$1,100 pair**



# Grange Antiques

We (Kevin and Linda) have operated Grange Antiques in Tasmania for 30 years focusing on the motto "Furniture for Life". Look forward to meeting you sometime soon.

Australian furniture & pottery; Australiana; decorative objects; 18th & 19th century furniture; Maritime; oak furniture; Scrimshaw; taxidermy; Treen; walking canes



Kevin Dahya  
M: 0417 282 720  
95 Gilbert Street  
Latrobe TAS 7307  
kevindahya@gmail.com  
Find us on Facebook & Instagram

Open: Thursdays and Fridays



A rare small proportioned Tasmanian origin cedar colonial chiffonier in absolute original condition. Striking timber grain and patina, c. 1840. **\$4,800**



A Georgian Welsh 3 drawer dresser on hoofed terminated front legs and a open shelf back in Oak. Dentil decoration time top cornice. Exceptional oak patina, c. 1760. **\$8,800**

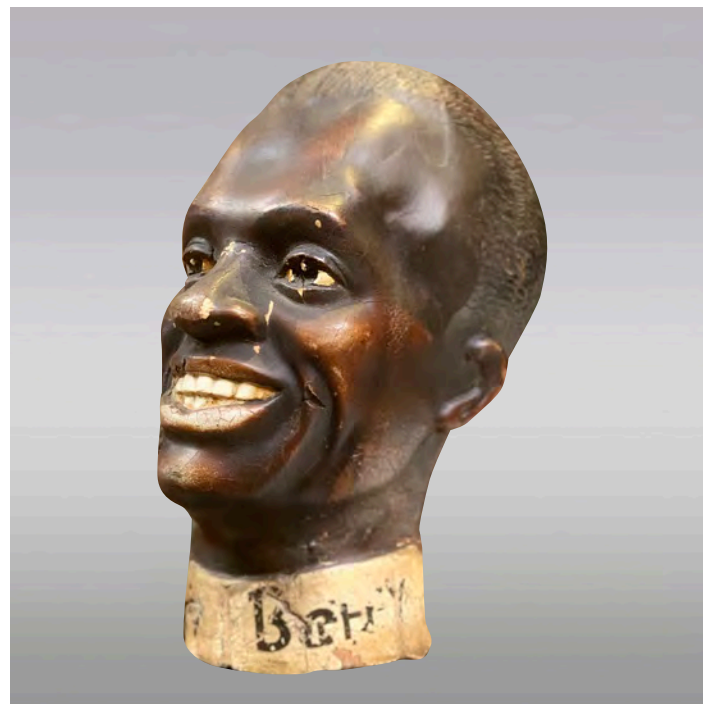




A regency ladies dressing chest, c. 1830 complete leather interior with faux bound books and internal writing compendium drawers and compartments. **\$4,800**



A signed apprentice miniature 3 drawer chest London origin, c. 1860 mahogany and in original condition. **\$1,850**



Possible toothpaste advertising hard rubber compound bust. American Negro origin, c. 1920. **\$2,800**

# Greene & Greene Antiques

Fine quality antique and estate jewellery, English and European ceramics and sterling silver, Georgian to Art Deco glass, collectable items and handsome gifts with small pieces of furniture.

GREENE  
GREENE  
ANTIQUES

Michael. A. Greene  
Victoria Greene  
T: 02 9328 1712  
M: 0400 804 978  
86 Queen Street  
Woollahra NSW 2025  
[info@michaelgreene.com.au](mailto:info@michaelgreene.com.au)  
[www.greeneandgreene.com.au](http://www.greeneandgreene.com.au)  
Find us on Facebook & Instagram

Open: Mon - Fri 10am-5pm  
Sat 10am-4pm, Sun Closed



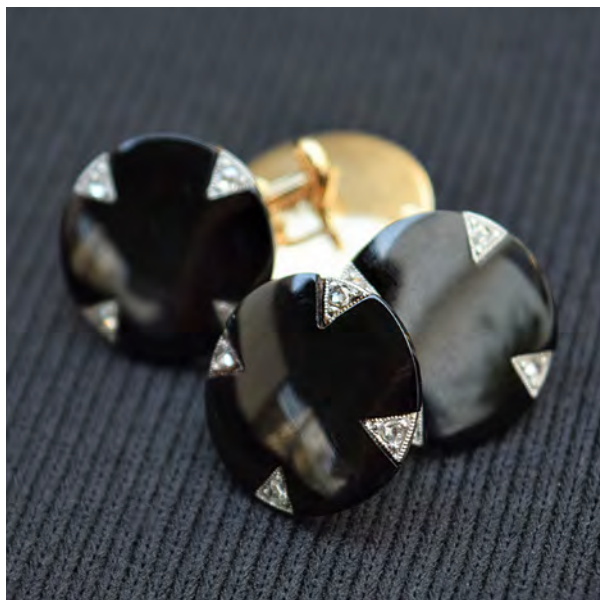
Royal Worcester exhibition piece hand-painted two-handled lidded vase, export only, 1949, height 33cm. \$7,250



Edwardian large oval shaped blister pearl pendant surrounded by diamonds set in 15ct gold and platinum, c. 1910. \$12,950



Pair of French onyx and diamond cufflinks set in 18ct yellow gold and platinum, c. 1920. **\$2,950**



English hallmarked family sized sterling silver tea pot with knight head finial, Birmingham 1870. **\$2,250**



Viennese cold-painted bronze figural lamp by Franz Bergman featuring a female figure offering water to a shepherd on a stone base, in working order, c. 1910, height 69cm. **\$16,000**



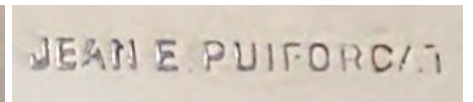
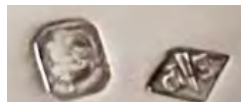
# J. B. Hawkins Antiques

Fine English furniture, clocks, English and Australian silver, works of art and treen. Established in Australia in 1967.



John Hawkins  
M: 0419 985 965  
'Bentley'  
Mole Creek Road  
Chudleigh TAS 7304  
jhawkins@acenet.com.au  
www.jbhawkinsantiques.com

By appointment only



One of two Art Deco goblets by Jean Puiforcat, Paris circa 1925, in silver mounted rosewood. This is one of his finest and most iconic designs, a master work of 20th century design suitable for any decorative arts museum collection. **\$18,500 each**



A magnificent 18 ct. gold South Australian malachite brooch with wreath of oak leaves for wisdom photograph of lady owner to rear, c. 1855. **\$9,750**



A rare collection of five, gold and silver mounted English late Neolithic flint arrowheads, three being barbed two leaf, all with the finest knapping, mounted in c. 1850s, dating from the 2000 to 4000 BC. **\$4,250**





A collection of Snuff Mulls: Irish boot snuff mull, Citizen Kelly hung on Wexford bridge in 1798, decapitated then his head kicked down the main street. An iconic item of Irish history; half a cloven hoof in silver ox ploughing prize, circa 1810; two Scottish rams horn snuff mulls, c. 1795. Irish horn boot. **\$12,500**



Two Victorian Kangaroo paw collector's items. One a hall marked English silver mounted paperweight. Robert Harper, London 1861. The other South Australian silver mounted as a plaid brooch for a lady of Scottish descent. **\$4,250 the two**



Two gold mounted Edinburgh Scottish Agate brooches in their original cases Edinburgh, c. 1870. **\$8,750**

# Lafite Fine Silver

Specialising in objects of vertu, including English and continental gold boxes and English, Irish and Scottish sterling silver from the sixteenth century to contemporary – spanning the reign of Henry VIII to Elizabeth II.

Our range extends to Irish provincial pieces, including Carden Terry of Cork and early English provincial silver from Exeter, Newcastle, Chester and York. Carrying a fine selection of quality vinaigrettes, nutmeg graters and 'castletop' card cases, in addition to pieces by Paul Storr, Paul de Lamerie and Hester Bateman.

Matthew Lafite is an approved valuer for the Australian Government's Cultural Gifts Program and can also undertake written valuation services for the purpose of insurance replacement, probate or family division.



Matthew Lafite  
T: +44(0)2030267048  
M: 0458 029 962  
Melbourne VIC 3000  
[info@LafiteFineSilver.com](mailto:info@LafiteFineSilver.com)  
[www.LafiteFineSilver.com](http://www.LafiteFineSilver.com)

By appointment



A superb George I Britannia standard silver, side pouring octagonal spouted coffee pot. By Simon Pantin. London, 1715. **\$19,500**



A fine George III solid sterling silver large sized soup tureen. With contemporary coat of arms. By Benjamin Smith (very important maker), London 1816. **\$24,000**





A magnificent Queen Anne, Britannia standard silver footed salver or tazza, of extremely large size, with contemporary armorial. By Edward Gibbon, London 1705. **\$24,000**



Paul Storr.  
A very fine and elegant George III Regency silver coffee jug on stand, with contemporary coat of arms. By Paul Storr. London, 1819. **\$25,000**



John Samuel Hunt, for Hunt & Roskell, goldsmiths and jewellers to Queen Victoria. A fine Victorian parcel gilt claret jug. London, 1861. **\$9,000**

# Lauder & Howard Antiques

18th, 19th & 20th century British & Continental furniture; Australian Colonial furniture. Bronzes, glass and porcelain. Pictures to 1950. Selected vintage and old carpets and textiles.



**LAUDER AND HOWARD**  
Antiques & Fine Art



Mark Howard  
Leslie Lauder  
T: 03 6289 6946  
M: 0412 095 110  
[enquiries@lauderandhoward.com](mailto:enquiries@lauderandhoward.com)  
[www.lauderandhoward.com](http://www.lauderandhoward.com)  
Find us on Facebook & Instagram

Open: Wednesday to Saturday  
10-5pm, Sunday 1-5pm



"Neptune Fountain, Piazza Navona, Rome" oil on board dated 1950 by Elaine Haxton. \$14,985



"Sir Charles Abney-Hastings, Bart., High Sheriff of Derbyshire". Oil on canvas dated 1825 and ascribed on the reverse, by John Jackson R.A. \$9,985





A Regency period 'grained rosewood' sofa, attributed to Gillows of Lancaster & London, the design is closely related to the 'Nelson' couch illustrated by Susan Stuart ('Gillows: 1730-1840') pp.356 British, c. 1820. **\$9,485**



An exhibition quality Brazilian rosewood collector's cabinet, inlaid with boxwood arabesques; the doors with gilt bronze grilles, the drawers spring loaded, opening by pressing a button. North European. c. 1825-1830. **\$34,950**



William & Mary period walnut & burr yew chest on stand, c. 1690. Provenance: Bennett family, Stonybrook Farm, Stonington, Connecticut, USA. **\$24,500**

# Leven Antiques

Antique sterling silver, jewellery, Georgian glass, porcelain, English and Colonial furniture. Supplier of Goddard's silver cleaning products.

Find us on Social Media on FACE BOOK @ <https://www.facebook.com/pages/Leven-Antiques-and-Leven-Antiques-Centre/149621425076049?ref=bookmarks>



Craig Broadfield  
T: 03 6425 5226  
M: 0419 509 730  
23 King Edward Street  
Ulverstone TAS 7315  
[craig@tassie.net.au](mailto:craig@tassie.net.au)  
[www.levenantiques.com.au](http://www.levenantiques.com.au)  
Find us on Facebook

Open: 10am - 5pm 7 days



c. 1890 gilded-bronze mounted novelty cockatoo jug with a ruby & clear glass body & handle. **\$1,250**



18th Century Sterling Silver: Bright-cut sugar tongs London c. 1775 Hester Bateman **\$295**; Double-ended marrow scoop London 1782 Hester Bateman **\$750**; Old English tablespoon London 1789 Hester Bateman **\$250**; Caddy spoon Birmingham 1797 Joseph Taylor **\$495**





18th century blue & white Worcester porcelain: c. 1760 cannon ball pattern tea bowl & saucer \$450; c. 1780 pine cone pattern dessert plate \$395; c. 1765 sparrow-beak jug decorated in an early print of "Plantation" pattern \$795



Silver mounted boxes and perfumes: Crystal & Sterling Silver cherub topped perfume Birmingham 1898 \$325; Sterling Silver hinged-lidded trinket box Birmingham 1902 \$395; Sterling Silver elongated hinged-lidded box Chester 1901 \$425; Sterling Silver & hand-cut crystal perfume London 1898 \$225



18th century English drinking glasses: Opaque twist-stem knopped with ogee bowl, c. 1765-70 \$1,100; Multi-spiral air-twist stemmed glass with bucket bowl, c. 1750 \$1,350; Jacobite opaque-twist stem glass decorated with rose-bud & oak leaf. \$2,450

# Moorabool Antique Galleries

Ceramics specialists 'from Neolithic to Nouveau', including fine English, French and German porcelain from the 18th and 19th century.

Also a large stock of fine 18th and 19th century Furniture, Glass, Silver, Old Sheffield Plate, Pewter, Prints and Paintings, Textiles and unusual items.

Shipwreck Ceramics.

Antiquities from Ancient Greece, Rome, Egypt.

Fossils and natural history.

Over 7,000 items in stock, on show in our historic 2 floor property in Geelong.

Established 1958.

Member of the Dealers Association since 1959.



Paul Rosenberg  
T: 03 5229 2970  
16 - 18 Ryrie Street  
Geelong VIC 3220  
[queries@moorabool.com](mailto:queries@moorabool.com)  
[www.moorabool.com](http://www.moorabool.com)

Weekdays 10am - 5pm, Saturday  
10am-4pm, Sunday CLOSED



Rare early Wegely (Berlin) figure of a partridge, modelled standing on a rocky plinth with scattered leaves and a corn of wheat, the bird beautifully painted with mottled brown feathers including 'eyes'. Incised numbers '3.1.' c. 1755. **\$4,400**



Roman bronze figure of Athena, shown wearing a winged helmet with crest, wearing flowing robes, once with a spear & shield, now missing. 3rd-4th century AD. **\$1,980**





Chinese porcelain blue and white 'Lotus Pond' bowl, painted with a band of tall lotus blooms and fern-like foliage all spiralling in a clock-ways direction, a stylised foliage border to the rim echoed inside above a broad band of scrolling flowerheads & foliage, the center with a rosette. Early Ming Dynasty, Hongzhi reign 1488 - 1505. The Lotus bloom rising from the mud, yet keeping pure, is a popular Buddhist image popular in the Hongzhi reign. **\$1,350**



Meissen plate decorated in rich Imari colours after a Japanese original, the center painted in underglaze blue, iron red and gold with a vase of flowers standing on a low table, the border with four panels of a moth and peony within a shaped reserve on an underglaze blue ground, spaced by a chrysanthemum on a thick gilt ground, the reverse with chrysanthemum branches and a triple blue line to the footrim. Ornate underglaze blue crossed swords mark, also 'K' for the decorator Kretschmar, c. 1740. **\$4,800**



Unusual English porcelain inkwell, modelled as a ripe pear opening to reveal a separate inkpot and small lid with flower knob, the rectangular gilt plinth encrusted with lifesize, lifelike flowers, standing on four tall acanthus leaf feet to the corners. Unmarked, possibly Minton, c. 1835. **\$1,650**

# Page Antiques

19th to early 20th century English, French and European furniture, clocks, spelter and bronze figures, lighting, and decorative objects. Specializing in antique French beds.



Guy Page  
Trish Page  
T: 03 9880 7433  
M: 0411 175 320  
175-177 Canterbury Rd  
Canterbury VIC 3126  
guypage@bigpond.com  
www.pageantiques.com.au

Open:  
Tuesday-Saturday 10am-5pm;  
Sunday 11am-4pm;  
Monday Closed



French bronze of youth with pan flute.  
1 m high. Signed D. Grisard c. 1890. **\$5,500**



19th century Austrian terracotta figure of a  
slave girl by Goldscheider, c. 1890. **\$3,500**



French bronze figure Ense et Aratro by  
Emile Andre Boisseau 63cm high c. 1890.  
**\$4,500**





French Art Deco bronzed spelter panthers on marble and onyx base c. 1920. **\$1,950**



French Louis XVI style 3 piece marble clock set featuring violet and white marble columns and lids and with gilded brass, Movement fully restored, c. 1900. **\$2,500**



French Louis XV style rosewood and kingwood 3 drawer marble top commode with a variety of inlaid woods and quality brass mounts, c. 1890. **\$2,950**

# Pentimento Pty Ltd

Vanity and sewing items, portrait miniatures, ceramics, vintage glassware, collectables and curios. Specialising in small items of tortoiseshell and pique jewellery.



Jill Roberts  
T: 03 9822 2767  
M: 0413 238 423  
Armadale Antique Centre  
1147 High Street  
Armadale VIC 3143  
[jill@pentimento.com.au](mailto:jill@pentimento.com.au)



Bronzed car bonnet mascot  
Signed G Eichhorn  
"Dragonfly"  
c. 1920. \$1,650



Mixed metal collie pocket watch holder with articulated mouth. English, c. 1910. \$1,150  
The dog is holding a floral silver and enamel double sided photograph pendant. French, c. 1950. \$550





A group of chinoiserie collectables  
Georgian lacquer face fan.

English, c. 1820. **\$475**

Ivory and silver geisha earrings.

French, c. 1920. **\$1,500**

Shibayama and silver card case.

French/Japanese c. 1900. **\$950**

Shibayama sculpture. Japanese, c. 1900. **\$1,400**



Miniature mahogany sideboard. Height 71 cm x width 61 cm  
x depth 23 cm. English, c. 1890. **\$2,300**



Terracotta figurine

"Automne"

Signed Raymonde Guerbe

(1894-1995) French,

c. 1930. **\$3,000**

# Rutherford

Rutherford has over sixty years of experience in fine antique jewellery and silver, earning them a reputation for one of the best ranges of unique and beautiful Victorian, Edwardian, Art Deco & Retro jewellery in Australia.

As well as their jewellery, their flagship store on Collins Street showcases an extensive collection of 18th, 19th & 20th century English silver. Three doors away, their Pearl shop carries the beautiful Australian South Sea pearls as well as black and gold South Sea pearls from select farms all over the world.

Visit [rutherford.com.au](http://rutherford.com.au) to view over 2,000 pieces or visit one of their four stores across Melbourne.



Wesley Rutherford  
T: 03 9650 7878  
182 Collins Street  
Melbourne VIC 3000  
[info@rutherford.com.au](mailto:info@rutherford.com.au)  
[www.rutherford.com.au](http://www.rutherford.com.au)

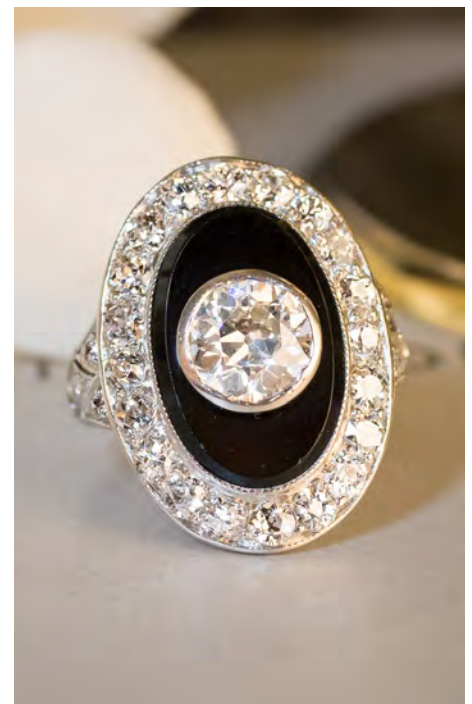
Refer to our website  
for trading hours



A beautiful original platinum Art Deco ring set with a central emerald and to either end a larger old cut diamond in an elongated pierced plaque surround with smaller grain set old cut diamonds on an engraved band, c. 1920. **\$6,800**

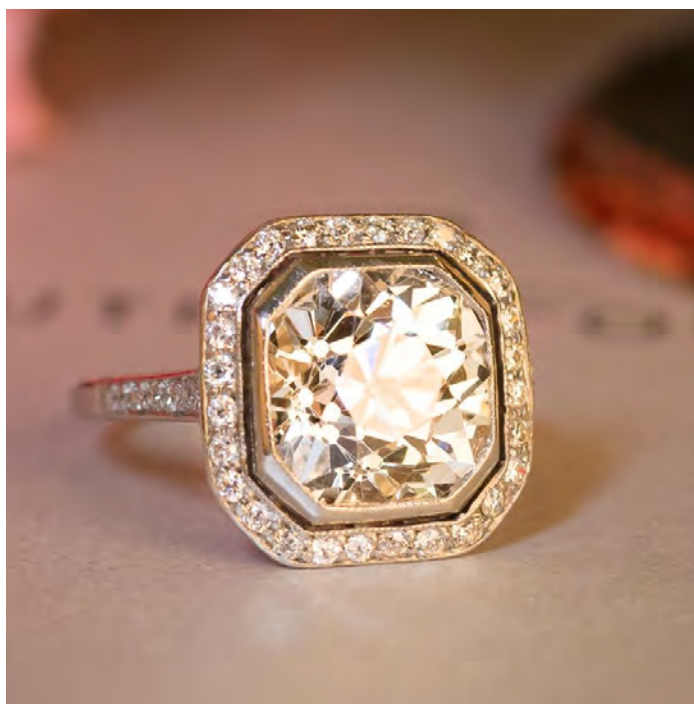


A cocktail ring with a stunning emerald cut aquamarine of estimated weight 16.07ct bezel set with a mill grain edge above U-shaped galleries to buckle style shoulders grain set with brilliant cut diamonds, c. 1950. **\$14,500**



An Art Deco platinum ring with an elongated oval top mount set to the centre with an Old Cut VS2 diamond of approximately 1.01ct, above an oval polished onyx plaque secured within a millgrain setting with further diamonds to the edge, c. 1920. **\$17,850**





Diamond, c.1900, mounted in a contemporary halo style ring set with a central old cut diamond of known weight 3.20ct, graded in mount as colour L-M, Clarity VS2, surrounded by 28 older brilliant cut diamonds in an octagonal shape. **\$36,000**



15ct rose gold earrings, each ten claw set with an old cut diamond weighing 2.04ct and 2.20ct respectively, both graded as colour N, clarity SI1, on hinged continental clip fasteners. Total Diamond Weight: 4.24ct, c. 1900. **\$42,500**

# Simpson's Antiques

Andrew Simpson established Simpson's Antiques in 1978, in Queen Street Woollahra, and was one of the first antique dealers to specialise in 19th century Australian cedar furniture. He is currently the country's foremost dealer in early colonial furniture, consulting on, Australian Colonial Furniture and Decorative Arts for collecting institutions and private clients nationally. Andrew Simpson was instrumental in the formation of the Australiana Society, a forum for collectors and enthusiasts alike.

Andrew was a co-author of *Australian Art Pottery 1900-1950* (2004) and *Nineteenth Century Australian Furniture* (1985) and *Australian Furniture Pictorial History and Dictionary 1788-1938* (1998) the latter two have become the standard references on the early history of furniture making in this country. Simpson's Antiques has supplied items to the following cultural institutions: ACT Museums and Galleries, Canberra; Art Gallery of South Australia, Adelaide; Historic Houses Trust of NSW, Sydney; Mitchell Library (SLNSW), Sydney; National Gallery of Australia, Canberra; National Museum of Australia, Canberra; National Portrait Gallery, Canberra; National Trust of Australia (NSW); Powerhouse Museum, Sydney; Queensland Art Gallery, Brisbane; State Library of Queensland, Brisbane; Tasmanian Museum and Art Gallery, Hobart; The Australiana Fund, Canberra and Sydney.



Andrew Simpson  
T: 0404 051 999  
PO Box 643  
Woollahra NSW 1350  
simpson@casuarinapress.com.au  
www.australianantiques.com.au

By appointment only



A very rare Australian Colonial cedar Revolving Dumb Waiter with two tiers rotating around a vase and ring turned column, supported on three scroll carved legs with brass castors. Attributed to William Hamilton of Hobart, see his trade label illustrated in *Nineteenth Century Australian Furniture* (Fig.140) Original 19th century patina, c. 1850 (94cm H. x 68cm Diam.) **\$8,500**



Made from Australian casuarina and attributed to Gillows of Lancaster, this English combination Games, Writing and Work Table features a backgammon board within a recess concealed by a reversing cover with a chess board on one side and an inlaid shell design to the other. The drawer contains a writing slide and pen & ink compartments. Two candlestick slides are also fitted to the table, c. 1810 (79cm x 48cm x 46cm) **\$8,750**





A pair of Early Australian Cedar Hall Chairs, in the Grecian style after a design by J.C. Loudon (1833), NSW Origin, 19th century patina, c. 1835 **\$2,250**



A late 19th century gilt-framed 'playful' oil on canvas depicting a parrot and two birds on a perch with two dogs, signed l.r. "J. Collins" (42cm x 35cm), c. 1880. **\$2,250**



An Australian cedar Hall or "Bank" Chair attributed to George Thwaites & Son of Melbourne, c. 1860 **\$1,250**

# Snook & Company Antique Dealers

Previously trading as Tooronga Hall Antiques established 1979. Fine quality and interesting 19th and 20th century furniture, clocks, barometers, musical boxes and decorative items. Come visit our new showroom and workshops.

## Specialties:

English and French clocks with an emphasis on skeleton clocks and clocks with unusual mechanical movements. Barometers, telescopes and nautical items. Our separate business HOROLOGICAL WORKSHOPS, located within our building offers a complete restoration service for all types of antique clocks, barometers, music boxes and scientific instruments. Case work a speciality. All work comes with a four year guarantee and a pick up and return of all restoration work is included in our service.

We are located close to the junction of Burke & Toorak Roads, Hawthorn East.



Christopher Snook  
Jenny Snook  
M: 0412 363 176 Chris  
M: 0412 100 409 Jenny  
1 Canterbury Place  
Hawthorn East VIC 3123  
snookantiques@bigpond.com  
www.snookantiques.com.au



A fine mahogany cased Geo III bracket clock by Charles Miles, London. The two train fusee movement with suspended verge escapement and finely engraved backplate. The silvered engraved dial with rise and fall and strike silent subsidiary dials to the arch, and mock pendulum and date to the centre, c. 1780. (500 x 300 x 190 cm). **\$17,000**



A large and impressive sailors shell valentine housed in a fine mahogany octagonal case with original lock and hinges, c. 1840. Diameter 360 cm. **\$3,250**





A rare five minute repeating French carriage clock housed in a gilt cannelée case. The movement with eight day leaver movement repeating the hours by depressing the front button and the five minute intervals by activating the rear button, c. 1880. Height 190 cm. **\$5,500**  
A good eight day miniature French carriage clock with leaver escapement housed in a superb well executed gilt case, c. 1890. Height 110 cm. **\$3,000**



An unusual desk clock and barometer in the manner of Thomas Cole. The clock and barometer housed in gilt decorated cases in the form of kettle drums with fine detailed engraving. The clock of eight day duration. Retailled by Henry Rodrigues, Piccadilly, London. Diamond registration mark for 1873. Clock (220 × 120 cm). Barometer (120 × 120 cm). **\$5,000 pair**



A rare New Zealand miniature chest of drawers the carcass of rimu and kahikate the drawers veneered in burr Totara and cross banded with a selection of native specimen timbers, c. 1870. (460 × 420 × 225 cm). **\$7,000.**

# The Antique Guild

Importers of fine jewellery, furniture, silver and art. Specialising in glass, silver from across the globe, Chinese art, African art, cocktail jewellery and the eccentric.

*The*  
**ANTIQUE  
GUILD**

Christopher Hughes  
Andrew Butterfield  
T: 07 3012 8771  
The Antique Guild  
38 Charlotte Street  
Brisbane QLD 4000  
[info@theantiqueguild.com.au](mailto:info@theantiqueguild.com.au)  
[www.theantiqueguild.com.au](http://www.theantiqueguild.com.au)

Open: Mon- Fri 10am - 6pm,  
Sat 10am-4pm



An original "Vaso Della Shell" gilt glass vase by Piero Fornasetti, c. 1940s. **\$15,000**



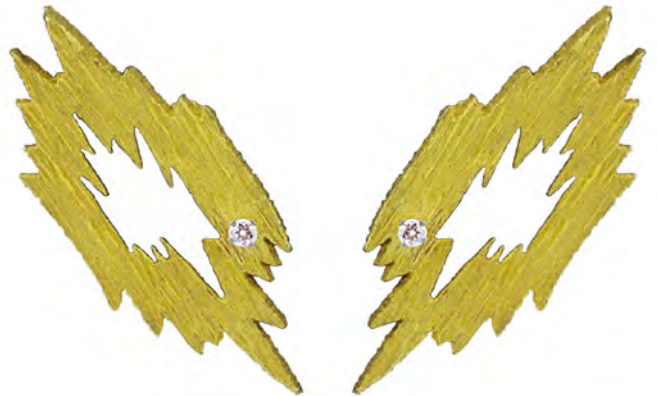
A pair of gilt bronze and polychrome enamel 'Zodiac' bookends by Tiffany Studios of New York, c. 1900 **\$1,650**



A five piece sterling silver and ebony tea and coffee service by Harald Nielsen for Georg Jensen. The set is in the Pyramid Pattern, c. 1935. **\$20,000**



A French Art Deco plaque ring in 18kt gold, set with emeralds, diamonds, and sapphires, c. 1920. **\$10,500**



A scarce pair of modernist 18kt gold and diamond ear clips by London jeweller Andrew Grima, c. 1970. **\$18,000**

# The Find Antiques

The Find Antiques specialises in high end 18th and 19th century French Antiques and Objet d'Art. With showrooms by appointment only in Noosa Queensland and Melbourne Victoria, owner Danielle Rusko has also created a boutique online platform for Interior Designers, Stylists, Private and Trade clients Australia wide where they can source the most original and unique pieces including European decorative and fine antiques

The Find Antiques is available across Australia for residential and commercial projects, property styling and offers sourcing, procuring, sale and hire alternatives.



Danielle Rusko  
T: 0459 221 378  
M: 0459 221 378  
1/15 Lionel Donovan Drive  
Noosaville QLD 4566  
[info@thefindantiques.com.au](mailto:info@thefindantiques.com.au)  
[www.thefindantiques.com.au](http://www.thefindantiques.com.au)

Find us on  
Facebook and Instagram  
[@thefindantiques\\_](#)

By appointment only



Large Antique French Louis Philippe Mirror Régence Cartouche  
c. 1850, France

A 19th century French Louis Philippe period gilt mirror with its original mercury mirror. Rounded rectangular frame with floral decoration, surmounted by a pediment of scrolling flowers and central shell shield. The gilding retains a good and soft patination, showing the original gilder's overlays of gold leaf. (H 183cm x W 112cm). **\$8,200**



Louis XIV Style Kingwood and Fruitwood Marquetry Gilt Metal Mounted  
3 Drawer Commode, c. 1860's - c. 1880's, France

The front, sides and legs of the commode are entirely veneered with a complicated marquetry pattern, in kingwood. The top having a circle of 12 sectors and the sides a circle of 8 sectors each. The commode has three long drawers enclosed in two medium rectangular and one small centre square gilt brass frames with matching decorative escutcheons of a scalloped shell rising up and flanked by the smiling heads of women between them. Four very distinctive stepped out sides with gilt lion's paw at their bases with a single rosette at their tops. The drawer handles are twisted, with an acorn drop. Each is attached to the commode via two rosettes. (H 85cm x W 136cm x D 68cm). **\$28,800**





Brett Whiteley 1939 – 1992  
"Poem For A Lover" (1988)

PROPERTY FROM A  
PRIVATE COLLECTION,  
QUEENSLAND  
Screenprint  
Signed 'brett whiteley'  
lower right; inscribed  
'34/80 Poem for a Lover'  
lower left, edition: 34 of 80  
Measurements: H 79.5cm  
x W 77.2cm  
Framed: H 84cm x W 86cm  
**\$14,000**

PROVENANCE: Savill  
Galleries, Private  
Collection, Queensland



Chinoiserie Chippendale Style Tortoiseshell Bamboo Dining Chairs in the Brighton Pavilion Manner. c. 1900's, England  
Set of six chinoiserie style with Asian motif indoor/outdoor dining chairs including two carvers. Featuring sculptural detail with curved fretwork, tortoise shell finish and caned seats. x2 Carvers x4 dining chairs (H 92cm x W 56cm x D 59cm). **\$5,900**



George III Sheraton Style Mahogany and Rosewood Serving Table. c. 1790, England  
Rosewood cross banded Mahogany serving table of elegant proportions. Figured rectangular top with a boxwood strung edge, raised on a fluted frieze separated by oval inlaid panels, repeated on the sides. Beautifully square tapered arrow foot legs headed with oval inlaid panels and rectangular collars all with boxwood stringing.  
PROVENANCE: Sotheby's Australia, Property of Dame Nellie Melba GBE, Melbourne, April 1, 2015, lot 403 (H 91cm x W 152cm x D 67cm). **\$17,900**

# The Woodshed Antiques

Graeme has traded in antiques for over 35 years with shops in both Armidale NSW and Ballarat Vic and presently operates by appointment from his workshop in Ballarat.

Graeme also exhibits at most city and regional antique fairs throughout Australia displaying a variety of furniture ranging from Australian Colonial, English Georgian, Regency and Victorian periods.

Through the workshop Graeme also offers a restoration service specialising in leather desk replacement with not just the traditional leather but also a hand coloured leather which gives the aged and worn look that is appropriate for period antique furniture.



Graeme Davidson  
T: 0408 659 249  
10/903 Doveton Street  
Ballarat VIC 3350  
woodshedantiques@bigpond.com

By appointment only



A SUBSTANTIAL AUSTRALIAN CEDAR TWO HEIGHT BOOKCASE, Australian, c. 1870  
Glazed doors above open section with mirrored back base fitted with two drawers and cupboards, mellow original patina. (W. 147 cm x D. 75 cm x H. 242 cm). **\$3,850**



SOLID OAK TRUNK, France, c. 1880  
Large oak trunk with original lock and key, iron carry handles, tapered sides and bracket feet. (L 117 cm x D 58 cm x H 75 cm). **\$1,200**





A FINE GEORGE III SHERATON  
DESIGN BREAKFRONT  
BOOKCASE, England, c. 1780  
Arched glazing bars with  
mostly original glass,  
boxwood string inlay  
decoration the lower section  
fitted with drawers and slides  
and supported on spade  
shaped feet. (W. 290 cm x  
D. 59 cm x H. 265 cm).  
**\$32,000**



REGENCY MAHOGANY DEED BOX, England, c. 1810  
Lovely quality box with string decorated lid, original drop carry handles and bracket feet.  
Lid opens in two sections. (W 59 cm x D 39 cm x H 40 cm). **\$1,850**

# Wallrocks

Wallrocks specialise in fine 18th & 19th century European antique furniture. Established for over 35 years and with a significant family history in antiques which dates back to the early 1920s, Wallrocks are highly trusted purveyors of stunning antique pieces that range from French Provincial, Louis XV and XVI, Regency, French Empire and more.

Our antiques are selected specifically for their quality, design and craftsmanship and Wallrocks guarantees the authenticity of our entire collection.

We understand the difficulties of buying online. As such we invest in the safe delivery of our furniture all over Australia and personally pack our antiques.

Should our pieces arrive and are not as we've described we provide a 100% refund.



T: 07 3862 2253

T: 0407 590 977

21 Crosby Road, Albion

Brisbane QLD 4010

[jessica@wallrocks.com.au](mailto:jessica@wallrocks.com.au)

[www.wallrocks.com.au](http://www.wallrocks.com.au)

Fine quality 19th century French writing desk, the quarter veneered kingwood top with original ormolu border above a pair of cross-banded drawers with original handles supported on four cabriole legs terminating in ormolu feet. c. 1890.  
**\$21,400**



A very fine 19th century Louis XVI French antique pedestal desk, the original leathered top above a plum pudding mahogany frieze housing three drawers supported on a pair of finely panelled and moulded pedestals with six drawers each embellished with high quality pierced ormolu mounts and escutcheon plates. (Dimensions: 1400mmL x 800mmW x 750mmH) c. 1890. **\$17,900**





An exceptional 19th century French Louis XV bureau plat. The kingwood top bordered by an ormolu moulded edge above a shaped serpentine frieze housing amboyna drawers with satinwood and sycamore string inlays and kingwood and tulipwood cross-bandings, further embellished with fine quality pierced gilded bronze, supported on well-shaped inlaid cabriole and ormolu legs, c. 1860. **\$38,800**



An exceptional 19th century French marquetry breakfront side cabinet, the fine quality white marble top and ormolu border above an amboyna frieze inlaid with boxwood string and floral inlays with kingwood cross-bandings above a panelled door profusely inlaid in the form of flowers, leaves, ribbons and musical instruments which opens to reveal a polished mahogany interior with string inlaid shelves all supported on a plinth base and turned ormolu feet. c. 1890 (Dimensions: 1000mm x 1100mmH x 420mmD). **\$27,550**



An exceptional 19th century English marquetry centre table in the manner of Edward Holmes Baldock, the serpentine shaped burr walnut top profusely inlaid with fine quality coloured asymmetric inlays in the form of flowers and leaves with kingwood cross-bandings and satinwood string inlays supported on a tri-form centre pedestal base also with kingwood cross-bandings. This table has strong similarities to Lot 198 sold at Bonhams London New Bond St in 2005, c. 1845. **\$37,500**

# Westbury Antiques

English 17th, 18th and early 19th century oak, mahogany and walnut furniture, Staffordshire pottery, English/Delft and other decorative arts. Resident on premises.



Harvey Wilkins  
Carol Wilkins  
T: 03 5465 3406  
M: 0412 949 721  
119 High Street  
Avoca VIC 3467  
hwilkins@optusnet.com.au  
www.westburyantiques.com.au

By appointment only



A fine early Georgian oak and walnut chest on stand. Six drawers including one to the base, a very original piece. (Height 146cm x Width 92cm x Depth 54cm), c. 1725 **\$7,500**



George III oak High Dresser Lancashire/Cheshire with false drawers opening as cupboards, three real lower base drawers (Height 200cm x Width 155cm x Depth 51cm), c. 1760. **\$6,000**





Georgian Settee with downswept reeded arms, continuing down to turned front supports. Reeded back rail.  
Height of back (79cm x Width 183cm), c. 1815. **\$5,450**



Pair of Comb Back Yew wood Windsor chairs with elm seats, cow horn stretchers and fine colour. (Depth of seats 42cm, Height of back rails 87cm), c. 1800-1810. **\$3,000**



A very fine and original George III oak chest of four graduating drawers. Each drawer decorated with narrow crossbanding in kingwood. Excellent golden colour. (Height 106cm x Width 94cm x Depth 50cm), c. 1770. **\$2,950**

# THE AUSTRALIAN ANTIQUE & ART DEALERS ASSOCIATION

## CODE OF PRACTICE

- 1a. All goods to be sold to the public by Association members shall have a label or ticket attached to or immediately adjacent to the item in question.
- 1b. Such labels or tickets must give as much reasonable information as possible about the goods and this shall normally include such detail as:
  - \* The full price
  - \* A circa date of manufacture (or the actual year if hallmarked or dated)
  - \* The material (eg. walnut, bronze, etc.)
  - \* The maker's mark or artist's name if relevant/known
  - \* Any major restoration or later additions
  - \* If reproduction
- 1c. Where this is undesirable or impractical for security or other grounds the full price shall be written on a price list or in a stock book, with a full description to identify the article, and is available at all times during business hours for inspection by the public on request. N.B. in the case of 1c, there shall be a prominent notice stating: Written prices of all goods offered for sale may be examined on request by members of the public.
2. The member shall not attempt to confuse or mislead the customer or falsely describe any of the goods he/she offers for sale or seeks to purchase. He/she shall in all respects comply with the provisions of the Australian Trade Practices Act and/or any State legislation of a particular nature.
3. Description details as indicated on the label and as offered verbally shall be written on a proper invoice which shall state the name, address and telephone number of the member and date of the transaction.
4. Members shall accept responsibility for descriptions of items given to members of the public by their staff. Staff must be appraised of all the requirements of the Association's Code of Practice.
5. Members shall not make unsolicited visits to private domestic premises.
6. Members shall apply standards of fair dealing equally to the public, members or non members.
7. Members have no authority to act on behalf of or speak for the Association, save insofar as expressly authorised by the Executive.
8. Members shall not state or imply that membership of the Association is a guarantee of authenticity of any article offered for sale or that membership entitles them to any special standing insofar as authentication of articles is concerned. Responsibility for all claims or statements as to the authenticity lies solely with the member.
9. Professional valuations carried out by members (ie for a fee) shall be provided in writing, signed and dated, and worded to indicate clearly their purpose ie. for Insurance (replacement value) or for Probate (market value) in accordance with the guidelines set down from time to time by the Association.
10. Members are required to co-operate to the best of their ability with customer protection agencies (eg. the police, trading standards authorities).
11. Members shall at all times seek to advance the professional reputation and standing of the Association by acting in an honourable fashion and by promoting the knowledge and understanding of Antiques and Fine Arts within the Australian community.

### ADDITIONAL INFORMATION:

- All prices quoted are \$AUD and include GST.
- Note no buyers premium.
- Purchases, plus cost of delivery are to be negotiated directly with the relevant dealer.
- Circa (c.): defined in this catalogue as approximately 10 years either side of the recorded date.
- Condition report - contact dealer and refer to the AAADA code of practice above.
- GST is not applicable to exported items but these items may be liable to import taxes in the country they are being imported to.
- The Australian country call code is +61