

AUSTRALIAN ANTIQUE & ART DEALERS ASSOCIATION



2020

CHRISTMAS CATALOGUE

ITEMS FOR SALE

ARTICLES OF INTEREST

DIRECTORY OF MEMBERS
& SERVICE PROVIDERS

ART-DESIGN-LIVING
aaada.org.au

AA&ADA
Buying with Confidence

WELCOME TO OUR CHRISTMAS ONLINE CATALOGUE

Dear AAADA supporters,

The Australian Antique & Art Dealers Association is excited to deliver our first Christmas Catalogue. This is the third catalogue in our very successful new vehicle to deliver unique items to clients.

Our Christmas offering could best be described as an Antique Shop with gifts for those who have everything. Its timing will ensure those special pieces will arrive in time. Also, by buying from AAADA members you are buying with certainty and supporting Australian Small Businesses.

To keep up to date with planned events in 2021, and to see new stock being added by dealers please join our mailing list by going to our website: www.aaada.org.au

On behalf of our AAADA members I wish you all a wonderful Christmas and may it bring much needed peace and joy to all.

Andrew Simpson
PRESIDENT

The Australian Antique & Art Dealers Association
PO Box 294 | Apollo Bay VIC 3233
T: 0498 059 661 | E: keren@aaada.org.au | www.aaada.org.au
Find us on Facebook & Instagram



CONTENTS

4-5	Alan Landis Antiques
6-7	Ancanthe
8-9	Anne Schofield Antiques
10-11	Antiquarian
12-13	Antique Unique & Modern Jewels
14-15	Antiques for the Christmas Table
16-17	Rare Australian 19th century Christmas & New Year Cards
18-19	Chiltons Antiques and Jewellery
20-21	Christopher Day Gallery
22-23	Day Gallery
24-25	Eaglemont Antiques
26-27	Fellia Melas Gallery
28-29	Grafton Galleries
30-31	Grange Antiques
32-33	Greene & Greene Antiques
34-35	J.B. Hawkins Antiques
36-37	Josef Lebovic Gallery
38-39	Lafite Fine Silver
40-41	Antiques for Animal Lovers
42-43	Man's best friend - Dawn Davis
44-45	Lauder & Howard Antiques & Fine Art
46-47	Lee Hardcastle Antiques
48-49	Nomadic Rug Traders
50-51	Peter Walker Fine Art
52-53	Rutherford
54-55	Simpson's Antiques
56-57	The Antique Guild
58-59	The Find Antiques
60-61	The Woodshed Antiques
62-63	Trinity Antiques
64-65	Antiques for lovers of fauna & flora
66-67	Novelty Silver Pin Cushions - Matthew Lafite
68-69	Wallrocks
70-71	Wright Gallery Fine Art
72	Antiques for the Sporting Enthusiast
73	Code of Practice
74-75	Directory of Members and Service Providers

Cover image:
Josef Lebovic Gallery
pg 34

Alan Landis Antiques

Alan Landis Antiques, established in 1977, is one of Australia's foremost authorities on English Ceramics (1750-1950) and Australian Decorative Arts, with expertise in Meissen, Australian and Judaica.

Alan Landis is a Life Fellow of the Powerhouse Museum, Honorary Curator to the National Trust of NSW and advisor to the Historic Houses Trust and Australian Fund. Alan has delivered lectures to the Wedgwood International Seminar in the USA and has published numerous original articles for local and international magazines. He is an ADFAS lecturer and has organised frequent Valuation Days for the National Trust, the Red Cross and the Salvation Army. As a registered valuer under the Cultural Gifts Program, Alan has valued the contents of Vaucluse House, Elizabeth Bay House, Rouse Hill, and the Sydney Town Hall collections. He is a Past President of the Antique Dealers Association of NSW, the Wedgwood Society of NSW, Vice-President of the Ceramic Collectors Society, as well as a past committee member of the Australian Society.



Alan Landis
Judy Landis
Shop 6,
Potts Point Galleries
67 Macleay St
Potts Point NSW 2011
0414 703 759
alanlandis@gmail.com
www.alanlandisantiques.com

Keith Murray Art Deco design silver plate,
retailed by Mappin & Webb Cruet set on Tray. c. 1930.
(diameter 12cm, height condiments 8cm). **\$1,100**
Ice Bucket, (diameter 20cm). **\$1,250**
Sugar Sifter, (H8cm). **\$550**



Japanese Bronze Lion on wood stand. Signed: Nishimura Yoshimitsu
Meiji period. c. 1890. (L18 x H13m). **\$2,250**



Wedgwood & Bentley (unmarked) black basalt rum kettle.
Engine turned body, Spaniel finial. Mint condition.
c. 1780. (H21 x L22cm). **\$2,200**



Chinese Dehua Lotus Bowl,
Superb condition 18th Century.
(Diameter 21cm x H12cm). **\$15,000**



Set of 12 Minton
transfer printed tiles;
"The Trades"
Designed by and
monogrammed IMS for
John Moyr Smith.
c. 1870-2.
(Diameter 15cm).
Set \$3,250

Ancanthe

Specialising in Australian historical manuscripts, photographs, art, ephemera, postcards, and decorative arts. We also stock select examples of Pacific, English & European material.

Clients include National and State galleries, museums and other institutions, and private collectors.



Jane Lennon
0400 103 316
ancanthe@bigpond.com

Viewing by arrangement



Kate Gardner (1852-1937), Melbourne's First Female Real Estate Agent. Her Umbrella, with silver name band, hallmarked London, 1911. Wood & metal frame, with green-stained horn branch-form handle featuring carved ivory frogs; original plaid rayon covering. L92.0 cm (handle 28.5cm). **\$4,850**

Circa 1903, Kate Gardner, a needlework teacher, opened a land and estate agency at 80 Swanston Street, Melbourne. She moved in high society and ordered many of her accoutrements from Asprey's, London. The press described her as a leading expert on land values and 'one of Melbourne's most outstanding women'. Her firm survives today as Gardner & Lang.



Anstruther Davidson (Scotland & Australia, 1829-1864), Sampler representing the Whaling Ship *Dorothy*, c. 1836. Silk embroidery on linen, in rosewood frame, with the last letters of her birthdate replaced with red wool. Traces to verso of newspaper dated 1864. (H51.5 x W42.0cm). **\$6,250**

Seven-year-old Anstruther Davidson was the daughter of Captain Thomas Davidson, whose initials are included in the embroidery. He was master of the *Dorothy*, a ship of the Dundee Whaling Fleet, Scotland. On 4 August 1857 Anstruther married John Donaldson, son of James Donaldson of Kangaroo Hall, Victoria. She died on 3 April 1864 at her home Bellevue House, Heidelberg, Victoria, a short time after her son John was born. The sampler was evidently framed to commemorate her death.



George Gordon McCrae (Australia, 1833-1927), Letters, including verses from an unpublished Ode of Welcome to the Prince of Wales & Drawing of the Galatea, Melbourne, 1860s. 4 ms letters (18.0 x 11.5 - 20.9 x 13.3cm), one with insert of an ink drawing of the *Galatea*. Light stains & wear; one letter has small holes to pp 3&4 (not affecting legibility). **\$2250 Group**

George Gordon McCrae was the son of the writer and artist Georgiana McCrae and father of the poet Hugh McCrae. The four letters, sent to fellow Australian writer and journalist George Northwood Oakley (1847-1899), deal with literary and artistic affairs and include a sketch of the Prince's flagship, taken on his visit to Melbourne in 1867.



Gwen Watson (Australia, 1916-1994), Australian Fairy Child feeding Possums, c. 1940s. Hand-modelled earthenware figure group, the base moulded with gumleaves. Incised signature 'G Watson'. (H24.5 x W19.5 x D17.5cm). **\$4,850**

Gwen Watson modelled her works in her kitchen at Leongatha in rural Victoria and fired them in a kiln in her bedroom. She developed an eclectic aesthetic, uniting such influences as the whimsicality of children's books with the rococo and baroque styles of Meissen and Sèvres figure groups. From 1945 Watson sold her pottery through retail outlets including Myer Emporium and Georges in Melbourne, and David Jones in Sydney.

This is a complex work, designed to be viewed from all angles. The fairy is likely to have been based on one of Watson's children, who acted as her models.



Negretti & Zambra, Crystal Palace, London (photographers), Jenny, Toby & Billy, members of R A Cunningham's Aboriginal Touring Company, 1884. Albumen paper photograph, cabinet card format, (H16.7 x W10.8cm). Minor scrapes, corner scrapes, some background fading, stains, water stain to right side of Billy's hip. **\$3,250**

Anne Schofield Antiques

This year we are excited to be celebrating the 50th anniversary of Anne Schofield Antiques. In 1970 we opened the first specialist antique jewellery shop in Australia on Queen Street Woollahra, an elegant tree lined boulevard which has become one of the finest shopping precincts in Sydney.

Member of the AAADA

Member of the Society of Jewellery Historians (SJH)

Life Fellow of the Powerhouse Museum Sydney

Approved Valuer of the Australian Government's Cultural Gifts Programme

Author (with Kevin Fahy) of AUSTRALIAN JEWELLERY, 19th and early 20th Century.

Specialising in 18th, 19th & early 20th century fine quality jewellery, including Australian jewellery.



Anne Schofield Antiques

Anne Schofield

36 Queen Street

Woollahra NSW 2025

02 9363 1326

asantiques@bigpond.com

info@anneschofieldantiques.com

www.anneschofieldantiques.com

Open:

Tuesday to Friday 11am – 5pm

Saturday 10am – 2pm



Edwardian necklace with pendant in the form of a butterfly set with diamonds, rubies, and emeralds, platinum and 18ct white gold c. 1910. W 3.5cm. \$4,500



Early Victorian 18ct gold 'acrostic' brooch, the initial letters of the gemstones spelling the word REGARD c. 1860. W 3cm. Original fitted case. \$5,500



Victorian 18ct gold 'Etruscan style' earrings c. 1880. H 4 cm. \$3,500



Georgian rose cut diamond **sunflower design earrings** c. 1830. H 2cm. **\$10,000**



Antique 15ct gold **spider brooch** set with cabochon garnets c. 1890. W 4cm. **\$3,500**



Art Nouveau 18ct gold and lilac **enamel flower brooch/pendant**, the centre set with a diamond c. 1900. W 3cm. **\$3,000**

Antiquarian

With a family history in antiques that goes back to 1970 from Adelaide, Elizabeth has an interest in many fields of antiques including jewellery, objet d'art, Asian, curiosities, art, Australiana, small furniture and decorative arts.



ELIZABETH SYBER

ANTIQUARIAN

Elizabeth Syber
0418 552 553
Now trading online & antique fairs
Melbourne, Victoria.
syber@bigpond.net.au
www.antiquarianonline.com.au



South Australian Adelaide **Bosley Pottery Gnome** c. 1900
(H67.5 x D24.5 x W23.5cm). **\$3,950**



9ct Gold and New Zealand Jade/Pounamu **Opera Length Necklace**
Australian c. 1890 116cm total length, 5.5cm maximum pendant drop.
c. 1890. **\$2,250**



Qing Chinese Lacquered & Parcel Gilt Carved Wood **Alter Table** c. 1860 (H120.0 x D195.0 x W39.0cm). **\$3,950**



Birmingham, England
9ct Gold Case 70gm c. 1923
(H1.3 x W8.5 x D6.5cm). **\$2,600**



French **Art Deco**
Carved Wood **Statue** c. 1930
(H47.5 x W67.0 x D18.5cm).
\$2,250

Antique Unique & Modern Jewels

Since 2004 Leigh has been sourcing beautiful Georgian, Victorian, Edwardian, Art Deco & Collectable Jewellery from all over the world.

Regular trips abroad to London, Paris, Dublin, New York, Istanbul have resulted in being able to find those unique, enticing and very individual bespoke pieces that have been much appreciated by clients for their individuality & provenance. Pieces indeed that buyers will treasure for life.

In the past few years high quality modern jewellery has been added to the fine collection, meeting now the requirements of clients seeking either genuine antique pieces or the latest, most modern bespoke items.

Exquisite diamond jewellery either antique or modern is always commented favourably upon & is complemented by all other precious gemstones in a wide variety of interesting styles. One can find in the collection earrings, rings, necklaces & pendants, enhancers, bracelets, bangles, fobs & brooches. Indeed something for everyone!



Leigh & Brian Enever
0419 149 743
l.se@bigpond.com
www.antiqueanduniquejewels.com

By appointment only

Private Showings as
requested in private homes



Antique Blue Sapphire & Diamond Ring

Antique, medium light blue 3 X Sapphire & 6 Rose Cut Diamond traditional Edwardian band Ring.

Set in 18ct yellow gold, hallmarked Chester. Circa 1906.

An extremely lively & pretty ring in excellent condition.

\$2,390



Victorian/Early Edwardian Amethyst Drop Earrings

Beautifully designed and hand made are these 9ct Antique Amethyst Drop Earrings originally marketed by Catanachs of Melbourne. They are medium purple in colour with excellent clarity, round cut, bezel set. 4 white with silver overtones seed pearls are set half way down the rod with a very pretty and most unusual design featured at the top on the ear stud. The Earrings measure 27mm x 9mm with a total Amethyst weight of 2 carats. c. 1900. **\$1,890**

**Art Deco 15 Carat Sapphire
& Diamond Pendant**

This lovely Deco Pendant features 3 Old European Cut Diamonds as its centrepiece, colour F-H & clarity SI1-SI2. The Diamonds are surrounded by 16 Carre Cut deep blue Sapphires & 34 Rose Cut Diamonds.

The total Diamond weight is 1.66 carats & total Sapphire weight 2.76 carats. The pendant measures 44mm X 17mm, was manufactured in Istanbul and nestles in the original box which states "Nacib K Djezvedjian; Joaillier, Constantinople. c. 1925. \$6,950



Victorian Emerald & Diamond half Hoop Ring

Hallmarked carved Hoop Ring in excellent condition, which features 3 Emeralds, Bluish-green, good clarity, weight 0.65 carats. They are flanked by 2 Old European Cut Diamonds, Colour G/H, totalling over half a carat. It has a polished band upswept to a decorative underrail with beautiful scrollwork. Manufactured Birmingham, 1898 with a total weight of 3.22 grams. \$3,680



Antique 18ct Yellow Gold Diamond Studded Snake Ring.

Handmade Edwardian 18ct Yellow Gold Diamond Ring featuring 5 Old Round Cut Diamonds, graduating in size close to half a carat in weight, G Colour, SI Clarity. This Ring would be suitable for a male or female, finger size being U but could also be re-sized. The hallmark is Birmingham 1910 & the Ring is in really excellent condition. \$2,190

Antiques for *the Christmas table*

SPECIAL FEATURE



English hallmarked sterling silver epergne centrepiece, Sheffield 1904, height 49cm. \$4,950
Greene & Greene



Chakla applique cotton textile, 81 x 83 cm. Rajasthan, India. ex. Tom and Margaret Bolster collection (Christmas exhibition 'Woven Treasures' November 28 – December 19). c. 1930. \$150
Nomadic Rug Traders



Merry Christmas. Qantas c. 1964. Colour screenprint, 75.9 x 51.5cm. Minor surface crazing, repaired minor missing portions to image centre right. Linen-backed. Text continues "Australia's round-the-world airline." Item #CL171-124. \$1,650
Josef Lebovic Gallery



Pair of 19th Century French Gilt Metal Figural Candlesticks. c.1880's, France. Beautiful and ornate pair of antique 19th century French gilt metal candlesticks. The column is adorned by a full length model of the Three Graces; the mythological three Charites and daughters of Zeus. Euphrosyne, Aglaea and Thalia – who were said to represent beauty, charm and joy. A richly decorated large single acanthus leaf is wrapped around the lower stem and on to the circular base which is embellished with palmettes. The Graces presided over banquets and gatherings primarily to entertain and delight the guests of the Gods. (H30 x D10.5cm). \$1,190
The Find Antiques



Silver plated flower baskets with original turquoise opaline glass inners, probably French, H19 x W34.5cm, c. 1900. \$2,200 the pair
Greene & Greene





Top left: An important **George III silver baluster mug**, owned by Earl Howe and inscribed, 'A celebration of 1st June'. Hester Bateman, London 1780. **\$8,000**.
 Top centre: A **George III Scottish silver wine funnel**. Robert Gray, Edinburgh c.1810. **\$2,250**.
 Top right: A very fine George II silver mug, with cypher initials. Augustine Courtauld, London 1735. **\$9,000**.
 Bottom rear: A collection of three large-size **George III silver pocket nutmeg graters**, c. 1800. **\$3,500** each.
 Bottom centre: Fine **Victorian silver gilt grape scissors**. George Adams, London 1840. **\$1,250**.
 Bottom left and right: A pair of crested **George III Scottish silver toddy ladles**. Alex Henderson, Edinburgh 1811. **\$550**
Lafite Fine Silver



Rare and Decorative Pair of 19th Century Gothic Style Brass Candlesticks by T Gaunt. c. 1880, Australia. Tall and ornately decorative pair of ecclesiastical altar candlesticks by renowned Australian Jeweller, Clockmaker and Manufacturer of Scientific Instruments, Thomas Ambrose Gaunt. Gaunt also manufactured gold and silver devotional jewellery and ecclesiastical ornaments, notably for St Patrick's Cathedral. Many items produced by Gaunt were limited due to the small size of his business making his products highly sought after and collectable. These candlesticks consist of a candle holder to the top with a rimmed edge and drip pan typical of Gothic design and leads down to a spiral twist column supported by a stepped circular base. (H43.5 x D15.5cm). **\$4,250**
The Find Antiques



Ceremonial silk coverlet, embroidered in silk, gold and silver thread, applied mica discs, circa early 20th century, 55 x 55 cm. Pushtun, Afghanistan.
 Ex. Tom and Margaret Bolster collection (Christmas exhibition 'Woven Treasures' November 28 – December 19). c. 1930. **\$165**
Nomadic Rug Traders



[Rare Australian Christmas Card]
 "Going For" The Bear. May Peace Be Thine This Xmas Day c. 1880s. Double-sided colour lithograph, 11.1 x 13.8cm. Minor paper loss to image verso. Text includes "Life has cares and many sorrows, and they stand about our path as the grim Australian warrior in the way. Face and fight them like a Briton, they will vanish in their wrath. And the sun of peace shine on your Christmas Day. Gibbs, Shallard & Co." One side depicts an Aboriginal warrior with a border decorated with shields, spears, clubs and boomerangs. The other side includes a fish, lizard and seagull. Item #CL194-55. **\$1,650**
Josef Lebovic Gallery



Mid-Century Italian Hollywood Regency Gilt Tole Metal Palm Leaf 2 Tier Serving Tray
 c. 1950's, Italian
 Mid-Century Italian Hollywood Regency Gilt Tole Metal Iron Palm Leaf 2 Tier Serving platter. Solid iron graduating frame with an attractive antiqued gold gilt finish with two feathered tiers on a pedestal base. Great decorative architectural element. Unusual form. (H46.5 x D18cm) **\$1,125**
The Find Antiques



RARE AUSTRALIAN 19TH CENTURY CHRISTMAS & NEW YEAR CARDS

JOSEF LEBOVIC



c. 1883. Group of 11 colour lithographs, greeting card format, most including printer's line, some inscribed and dated "1883" in various hands in ink verso, sizes from 11 × 13.1cm to 16.3 × 13cm. Some with soiling, stains, creases or repaired paper loss.

Price \$16,500 collection.

One card is signed "C.H. Hunt" in image, and two cards are printed by John Sands. The remainder of the cards are printed by Gibbs, Shallard and Co. Text verso includes verses, the names of plants depicted and Australian Christmas Card Series.

Accompanied with a wood engraving advertisement entitled "A selection from Gibbs, Shallard & Co.'s Christmas and New Year Cards, 1883-4" which illustrates one of the cards in this group. Also included, for reference purposes, is a photocopy of a page of newsprint from the Illustrated Sydney News, dated 1885, advertising Christmas cards, including titles and prices. CL162-25.

JOSEF LEBOVIC GALLERY





Chiltons Antiques and Jewellery

Chilton's Antiques are Sydney leading specialist dealers in antique jewellery with a huge range of rings, necklaces, earrings, brooches. We are located 40mins from Sydney CBD & have a shop full of the most amazing goodies, we are worth a trip out to visit us.

All items sold come with insurance valuation certificates & a Chiltons guarantee.

CHILTON'S
ANTIQUES

Liz Stevens
579 Kingsway
Miranda NSW 2228
02 9524 0360
info@chiltonsantiques.com.au
www.chiltonsantiques.com.au

Open:
Monday to Tuesday:
by appointment only
Wednesday to Friday:
10am – 5pm
Saturday: 10am – 3pm



Slightly naughty nude. Very deco lady with floral dressing room getting ready. **Sterling silver enamel card/ cigarette case** hallmarked 1912. Birmingham England. In excellent condition no repairs enamel (H9cm x W6.5cm). **\$2,990**



18ct yellow gold **ladies pocket watch** with brooch bar fittings attached in its original blue velvet fitted case. The watch is late Victorian with floral hand engraved case that is extremely fine quality. Probably English c. 1890s. In pristine condition. Size 7.5cm x 3.2cm with fittings. **\$3,995**



9ct yellow gold flower cluster **diamond pearl brooch** The brooch is c. 1930s era set with old mine cut diamonds 6cm length set with 10 diamonds with larger central pearl. Very pretty stylish piece In excellent condition. **\$2,850**



18ct yellow & white gold French Edwardian c. 1900s **cluster ring**. The diamond in the centre is 0.56cts and is set with surrounding rose cut diamonds. The ring is in excellent condition. Finger size P 1/2 but this can be adjusted. The centre cluster 12.3mm. **\$6,500**



15ct rose gold & silver topped **Art Nouveau floral vines ring** with Swiss hallmarks, very European in design. c. 1880s in excellent condition. Finger size N but this can be adjusted (25mm x 10mm). **\$4,990**

Christopher Day Gallery

The Christopher Day Gallery was established in 1979, dealing in 19th and 20th Century Traditional and Modern Art. Over this time, we have advised and helped form many collections in Australia and Worldwide. We purchase paintings outright or sell on a commission basis.



41st YEAR CHRISTMAS EXHIBITION
cnr Elizabeth & Windsor Streets
Paddington NSW 2021
0418 403 928
cdaygallery@bigpond.com
www.cdaygallery.com.au

Open:
Wednesday to Friday 12 – 3.30pm
Saturday 12 – 6pm
or by appointment



John Allcot (1888-1973) **Sydney Harbour from above The Royal Yacht Squadron**
c. 1940's, oil on canvas (60 x 76cm). Signed lower left. Original frame. **\$11,000**



Desire Thomassin-Renardt (1858-1933) **Bringing in the Catch**. c. 1890's, oil on canvas (70 x 95cm). Signed lower left. Original frame. **\$8,800**



Charles Blackman (1928-2018)
Rainbow Lovers. c. 1980. Pastel on paper. (80 x 50cm)
Signed upper left. **\$15,000**



John Olsen (born 1928)
Notes on Basho's Frog
 Mixed media (42 x 41cm).
 Signed lower right dated 2007.
\$24,000



Gladstone Eyre (1863-1933), **Sydney Skyline from Hungry Bay**. c. 1880's. Watercolour, (59 x 115cm). Signed lower right. **\$12,500**

Day Gallery

Day Gallery was founded in 2010 by Vincent and Helen Day.

The focus is to exhibit works of art that are relevant to Australian culture from our colonial history, through to pieces expressing a contemporary point of view regarding social and environment issues by emerging Australian artists.

DAY GALLERY

Vincent Day
Helen Day
27-29 Govett's Leap Road
Blackheath NSW 2785
0404 930 120
0424 842 294
info@daygallery.art
www.daygallery.com.au

Open: Friday to Monday
10am – 5pm



Alexander Schramm (Aust. 1813-1864) **Native Encampment In South Australia.** c. 1859. Chalk lithograph printed from two stones, on thick wove paper. Title printed into the lower margin. Image size 29.8 cm x 42.2 cm. Sheet size 39.5 x 53 cm. Discolouration to the paper, and repaired tears on the upper left and centre of the work. The sheet has wide margins and is not laid down. A rare lithograph printed in Adelaide c.1859.



Alexander Schramm (Aust. 1813-1864) **South Australian Natives On The Tramp.** c. 1859. Chalk lithograph printed from two stones, on thick wove paper. Title printed into the lower margin. Image size 29.5 cm x 43.4cm. The paper is slightly discoloured, and a tear has been repaired on the upper left. The sheet has wide margins and is not laid down.

\$25,000 the pair.

Very rare depictions of Indigenous life.

Represented in: National Gallery: NGA 89.1375 NGA IRN: 96297 (Terrible condition).

State Library of South Australia: B 70986 National Library of Australia: Rex Nan Kivell NK436/B.

Alexander Schramm 1813-1864

A native of Berlin, Germany, where his father was a book seller, Schramm studied at the Berlin Academy of the Arts. In 1849 Schramm migrated to South Australia arriving on the 7th of August aboard the *Princess Louise* one of 12 ships that brought around 1500 German immigrants to South Australia. His life in Adelaide was not well documented, he was unmarried, and did not have any direct family in South Australia. He died of Tuberculosis on the 8th of November 1864, at the age of 50 and was given a paupers burial. A directory entry from 1851 lists a Alexander Schramm, Painter, Charles Street.

Schramm was one of a small group of colonial artists who painted in a way that treated the indigenous people with great sensitivity. His paintings and lithographs, predominately depicting indigenous life, reflect their plight and even show contempt for European Values. Focusing on the Australian landscape and the manners and customs of the Aborigines, his work is culturally significant. He exhibited his paintings at the South Australian Society of Arts from as early as 1850. He soon developed a reputation for his talent with the brush. Art critic Mary Overbury described the artist and his situation: "A German by birth, an artist by nature and training, small in stature, dark and somewhat retiring in disposition, he made but few intimates and lived on the proceeds of his brush, his paintings were often disposed of far beneath their real value" Much of Schramm's work has been lost with time, many examples have not survived.



Adam Gustavus Ball (1821-1882) **Hunting Kangaroo on Aroona Station, SA** c.1860.
Pencil on laid paper. Signed on the lower right with initials. Inscribed verso. (W33.7 x H46cm)
Very good overall condition. Housed in a period timber frame.
\$45,000

Provenance: Commissioned by Johnson Frederick Hayward c 1854 Aroona station SA.

Taken back to Aroona House in Freshford Bath UK.

This drawing was owned by John Hayward, the first Pastoralist to arrive in the Aroona Valley in 1851. Adam Ball worked in the area in the mid 1850s and drew at least one work for local another station owner George Marchant of Arkaba Station.

It is very possible that this drawing was one of the first pictorial records of the original Australians living in the Aroona/Flinders Ranges region of South Australia.

A group of drawings that had been in Hayward's possession in 'Aroona, Freshford, Bath' were discovered in 2013. It was thought that these drawings were taken back to the UK as a souvenir of his time in Australia. This drawing was a part of the group.

The drawings have been sold to various institutions and private collections since then. The drawing has an inscription verso in a 19th century hand (Quite possibly the hand of Johnstone Frederick Hayward) that states, '*This is the property of J F Hayward of Aroona Freshwater Bath UK*'. Aroona, north of Wilpena in the Flinders Ranges, was taken up as a lease for the first time in 1851 by the Browne brothers who offered J F Hayward a half share. The property was stocked with sheep driven up from Encounter Bay by Hayward. Aroona consisted of about 86 square miles of good salt bush country, or in another source rock-strewn mountains and porcupine grass. However there were good springs of water and a fairly reliable rainfall. Hayward sold Aroona to William

Marchant in 1862. Aroona is now part of Oraparinna station.

Eaglemont Antiques

At Eaglemont Antiques we have a fond attachment to 18th & 19th century antiques, art and design. We understand that today's consumers like to mix and experiment, adding personal touches to their interiors, using a statement piece that conceptualises the rhythms of fashion. We offer assistance in the use and placement of antiques into period or contemporary settings with a personal touch combined with a friendly and efficient manner that makes shopping for antiques, a real experience.

*Eaglemont
Antiques*

Dawn Davis
PO BOX 131
Portarlington VIC 3223
0408 530 259
dawn@eaglemontantiques.com.au
www.eaglemontantiques.com.au

By appointment only



A mid 19th century papier mache **spill vase** by **Jennings & Betteridge** (England). A charming study of a seated dog, with gilded leaves and flowers verso. H13cm. c. 1880. **\$750**



A boxed Edwardian period 15 carat gold **Essex Crystal Fox Hunters Stick Pin**. In a fitted leather box with silk lining by Martin & Co. Cheltenham, England. c. 1900. **\$850**



A William IV **Sterling Silver Cheese Scoop**, Sheffield 1833, maker's mark for Aaron Hadfield, In Queens Pattern. Length 26cm. \$375



A **Japanese Ivory & Ebony dog whistle** in the form of a hound dog Meiji Period 1868-1912. A charming study of a hound with long droopy ears, with glass bead eyes. Complete with himatoshi. Length 5cm. \$895



A **Staffordshire glazed ceramic dog whistle** in the form of a hound dog A characteristic pose of a faithful hound England. c.1820. Length 6cm. \$895

Fellia Melas Gallery

Fellia Melas Gallery is focusing in the Secondary and Primary Art Markets with regular Group and Solo Exhibitions.
Incorporating an extensive Stockroom of Australia's most sought after Artists.
We buy, Consign and Sell Australian Art.



Fellia Melas
2 Moncur Street
Woollahra NSW 2025
02 9363 5616
0418 362 451
art@fmelasangallery.com.au
www.fmelasangallery.com.au

Open:
Tuesday to Saturday 10am – 5pm
Sun & Mon by appointment only



Mary Troy (1889-1973)
Interior c.1950's, oil on board.
75 x 63cm. Provenance
(Private collection Sydney).
Good condition.
\$4,000



Roland Wakelin (1887-1971). **Still Life**. c.1950's. Oil on Board. 40 x 50cm.
Provenance (Private collection NSW). Condition: as new. **\$7,500**



Margaret Olley (1923-2011). **Still Life** c. 1950's.
Ink & Wash on paper. 60 x 48cm
Provenance (private collection Sydney).
Good condition. **\$12,900**



Vida Lahey (1882-1968). **Still life with wattle**. c.1920's. Oil on Board. 21 x 28cm. Provenance (Private collection ACT). Good condition. **\$12,500**



Dorothy Mary Braund
(1926-2013) **Figures at the
Beach**. Gouach on Paper.
40 x 50cm. Provenance
(Private Collection ACT)
c. 1970. Good condition.
\$4,500

Grafton Galleries

The business was founded in 1945 by former WWI nurse Elsie Cook. Her son, Peter Cook, after a career in the Army, joined Elsie in 1959. He wrote two books on antiques, was a long standing author of a column in the Women's Weekly and was a panellist on the ABC show "For Love or Money". Hartley Cook is now the third generation dealer in the business.

Quality English, European and Asian furniture, silver, glass, ceramics, paintings and decorative items.



Hartley Cook
Shop 1/15 Boundary Street
Rushcutters Bay NSW 2011
02 9361 3567
0417 200 441
hartley@graftongalleries.com.au

Open: Monday to Friday,
10am – 5pm



A Nanking Cargo (Geldermalsen) blue and white vomit pot, (H9 x W16cm). c. 1752. **\$2,000**



A superb George V sterling silver and tortoiseshell mantle clock, made in London for Hardy Brothers. H: 15cm. 1912. **\$2,500**



A Russian **silver coffee pot**, St Petersburg, 1801. Alexander Yashinov- Assay Master. Johann Tiedemann- Maker. (H15cm W26oz). **\$3,500**



One from a pair of **Indian ebony and ivory elephant heads**. (W34 x D33cm). c.1880. **\$3,250 pair**



Two **Japanese Meiji period bronze incense burners** in the shape of fruit. (H10 x W13cm x D11cm). c. 1890. **\$1,950 the two**

Grange Antiques

We (Kevin and Linda) have operated Grange Antiques in Tasmania for 30 years focusing on the motto "Furniture for Life". Look forward to meeting you sometime soon.

Australian furniture & pottery; Australiana; decorative objects; 18th & 19th century furniture; maritime; oak furniture; Scrimshaw; taxidermy; treen; walking canes



Kevin Dahya
95 Gilbert Street
Latrobe TAS 7307
0417 282 720
kevindahya@gmail.com
Find us on Facebook & Instagram

Open: Thursdays and Fridays



A **miniature Medical syringe kit** of fine proportions. This comes housed in the original lined hard case. c. 1880. (W85 x D30 x H17mm). **\$550**



A **taxidermy shoulder mount** of a well-lived **Stud Ram** of a contemporary period. Tasmanian origin. Fleece in wonderful condition c. 1980's (W550 x H700 x D450). **\$2,500**



Whale bone and Whale ivory walking canes. One with a Turks head knot decoration to the top and the other a carved fist holding a seeing apparatus. Length 870. c. 1860's. **\$3,800 each**



A 1949 convertible **Morris Minor Low Light**. Restored previously. Inside totally refurbished. Early engine number. Service history available for some of it's life. UK Origin. **\$16,500**



A pair of **Sheraton period Mahogany Hall chairs** of an architectural design. Tapered legs and the back have been decorated with stepped tapered pilasters. The central part of the chair has a ellipse onset under a swag and tail decoration. UK origin. c. 1800, (H900 x W450 x D430mm). **\$1,950 the pair**

Greene & Greene Antiques

Fine quality antique and estate jewellery, English and European ceramics and sterling silver, Georgian to Art Deco glass, collectable items and handsome gifts with small pieces of furniture.

GREENE
GREENE
ANTIQUES

Michael. A. Greene
Victoria Greene
86 Queen Street
Woollahra NSW 2025
02 9328 1712
0400 804 978
info@michaelgreene.com.au
www.greeneandgreene.com.au
Find us on Facebook & Instagram

Open: Monday to Friday
10am – 5pm
Saturday 10am – 4pm,
Closed on Sundays except in
December for Christmas shopping



Georgian neo-classical mourning ring, set in 15ct gold, dated 1792, hand painted on ivory, height 2.9cm **\$3,250**

Georgian mourning ring set in 15ct gold depicting a female figure in classical drapery mourning beside a neoclassical urn with the initials CH, inscription 'OBIT 22 NOVR' with bright cut hand engraved detail on the outer edge of setting and shoulders. c. 1790, height 2.6cm. **\$2,250**

15ct gold handpainted on ivory brooch/pendant with surrounding seed pearls, some damage to the painting. c. 1790, height 3.5cm. **\$895**



Large Moorcroft Pottery vase, Orchid Pattern, drawn by William Moorcroft in 1937 and developed by Walter from 1947. Fully marked on base, height 26cm, late 1940s. **\$4,950**

Original Art Deco diamond pendant
handmade in platinum with a 1.05ct
pear shaped diamond surrounded by
a total of approx. 1.80ct of old cut and
rose cut diamonds, probably French,
height from top to bottom 5cm. c. 1920.
\$18,950



René Lalique "Ceylan" opalescent vase, height 24cm. c. 1920.
\$18,950



French Art Deco pâte-de-verre lamp by Gabriel Argy-Rousseau on its
original wrought iron base, height 15cm. c. 1920. **\$14,500**

J. B. Hawkins Antiques

Fine English furniture, clocks, English and Australian silver, works of art and
treen. Established in Australia in 1967.



John Hawkins
'Bentley'
Mole Creek Road
Chudleigh TAS 7304
0419 985 965
jhawkins@acenet.com.au
www.jbhawkinsantiques.com

By appointment only



A superbly mounted British Museum Specimen of a **West Australian Banded Anteater or Numbat** on a standard Museum boxwood stand. The Numbat is under threat from habitat loss and introduced predators like foxes and feral cats. With an estimated population of fewer than 1000 individuals the future of this unique marsupial is in doubt. English. Rowland Ward. c. 1900. **\$4,750**



A fine prenumbered **8-day Thomas Cole strut clock** with calendar, retailed by Hunt and Roskell. English. c. 1845. **\$22,500**



An Australian **'Happy New Year Card'** made from the head of a Parrot set in a cigar box, in virtually untouched state. Australian. c. 1895. **\$1,650**

A Goldfields Nugget with Papal Connections sent to the Pope or the Cardinal in Rome after the receipt of a Papal gift to the Catholic church at Mansfield Victoria of a painting attributed to Sassoferrato of the Madonna and Child.

A possible donor was the Stonyhurst, Jesuit educated, Dr. John Pearson Rowe (1810-1878) who owned the 'Loyola Run' near Mansfield. In October 1878 Rowe supplied information to police Sergeant Kennedy on the whereabouts of Ned Kelly. Acting on Rowe's advice, Kennedy and his police party rode into the Wombat Ranges, where three of them were killed; and the Kelly Gang legend was born.

The large Quartz nugget on a superb Italian rosso antico base is a rare relic of the Australian Gold Rush, it comes from the collection of Cardinal Giacomo Antonelli (1806-1876), the "Italian Richelieu", the Cardinal Deacon, Secretary of State to the Vatican from 1848 until his death in 1876.

Australian nugget, mounted, Italy. c. 1875. **\$60,000**



A fine early lignum vitae **pestle and mortar** with no sapwood, of an outstanding bronze colour. English. c. 1650. **\$4,000**



Josef Lebovic Gallery

Celebrating 43 Years • Established 1977

Australian and international original prints and drawings from old master to 20th century, vintage photography from 1850's to 21st century. Australian posters and printed ephemera.

Member: AA&ADA • A&NZAA • IVPDA (USA) • AIPAD (USA) • IFPDA (USA)



Josef and Jeanne Lebovic
103a Anzac Parade,
Kensington, NSW
Postal: PO Box 93,
Kensington NSW 2033
+61 2 9663 4848
0411 755 887
josef@joseflebovicgallery.com
www.joseflebovicgallery.com

Open: by appointment
or by chance



Keisai Eisen (Japanese, 1790-1848)

[Woman With Wooden Bucket And Morning Glories],
c1840s. Colour woodcut, printed on two sheets, text, censor's and
printer's seals in Japanese in block lower left, 65.5 × 22.2cm. Slight
soiling and repaired chips to edges. Laid down on acid-free paper.
Text includes haiku poem, Morning Glory, by Kaga Chiyome. Printer's
seal appears to read "Gin." Ref CL125/10. **\$5,500**

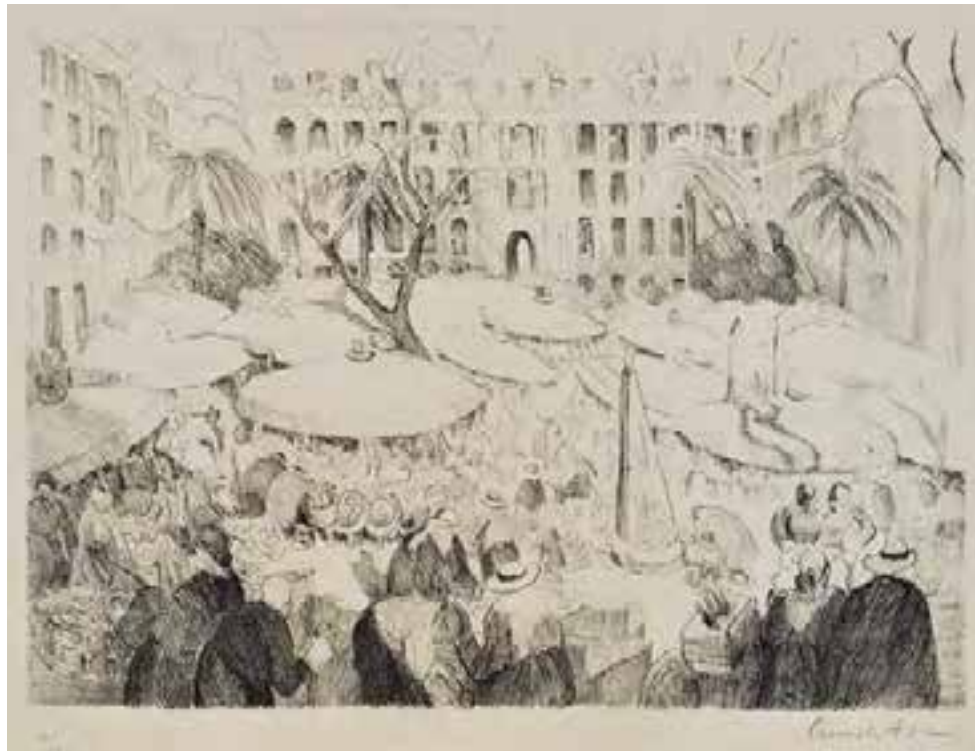


Brisbane, 1888. Colour lithograph, panorama, signed W.A. Carson, dated and
titled in image lower left and centre, annotated in ink in an unknown hand
on image lower right, 52.7 × 79.2cm. Stains, repaired tears and paper loss,
trimmed margins. Laid down on acid-free paper. Annotation reads "This is our
shop." An Uncommon aerial view of Brisbane. Ref CL134/109. **\$3,950**

Ansel Adams (American, 1902-1984) **Moon And Half Dome, Yosemite National Park, California**, 1960/later printing. Silver gelatin photograph, Yosemite National Park authentication stamp and initialled in ink by printer Alan Ross verso, 24.1 × 18cm. Laid down on slightly foxed original presentation backing. Framed Stamp includes "Special edition photographs of Yosemite by Ansel Adams. Printed by Alan Ross from Ansel Adams' original negative under his supervision. Sold only through The Ansel Adams Gallery, Yosemite National Park, CA." In speaking of this image Adams stated "I have made many of my well-known photographs with the Hasselblad, but to single one out, a favourite is Moon and Half Dome, Yosemite National Park, 1960. I was driving a bit aimlessly around the valley one winter afternoon, when I clearly saw an image in my mind's eye of Half Dome as the moon rose over its right shoulder. . . I used my 250mm telephoto to compress the space relationship, making the moon appear somewhat larger in relation to Half Dome than it was in reality." (Ref: SW Texas State University) Ref CL144/1. **\$3,950**



Bertha Lum (American, 1869-1954) **The South Wind**, 1921. Colour woodcut, signed in pencil on image lower right, annotated "copyright", dated and numbered "35" in pencil in lower margin, 40.1 × 24.8cm. Slight cockling to edges and old mount burn. Laid down on acid-free tissue. Also known as A Merry Little Breeze. Listed in Gravalos, Bertha Lum, Smithsonian, 1991, p97. Considered one of Lum's best images in this style. Ref CL140/83. **\$4,400**



Ethel Carrick-Fox (Australian 1872-1952) **The Fruit Market, Nice [France]**, 1933. Lithograph, editioned 4/25 and signed in pencil in lower margin, 32.5 × 45.6cm. Slight crease to right portion of image, minor soiling and foxing overall. This is one of a small number of original prints created by Carrick Fox during her lifetime. Hand coloured version held in the NGA collection. Ref CL160/12. **\$3,950**

Lafite Fine Silver

Specialising in objects of vertu, including English and continental gold boxes and English, Irish and Scottish sterling silver from the sixteenth century to contemporary



Matthew Lafite
+44(0)2030267048
0458 029 962
Melbourne VIC 3000
info@LafiteFineSilver.com
www.LafiteFineSilver.com

By appointment



A very rare Commonwealth period **silver two-handled porringer**. Ensuite with later fitted presentation case. Maker: 'SA', London. 1658. **\$14,000**



A collection of silver by Hester Bateman. All crisply engraved and fully hallmarked for London, 1783-4. Top: A silver teapot with bright-cut decoration. Bottom left: A silver tea caddy. Bottom right: A silver swing handle sweetmeat basket. **\$19,000 for the collection**
Please enquire regarding individual pieces.



A fine pair of **George III silver-gilt goblets**. By Thomas Ollivant of Manchester, hallmarked London. 1796. **\$7,850**



A collection of early 18th century English silver.

Left: A pair of George I silver octagonal tea caddies. John Farnell, London 1722. Right: A fine George I Britannia Standard silver octagonal coffee pot, with side-pouring spout and turned fruitwood handle. William Fawdrey, London. 1719.

Price for the collection: \$42,000

Please enquire regarding individual pieces.



A rare pair of **Victorian novelty silver gryphon stirrup cups** of large size. William Leuchars, London. 1883. **\$18,000**



Ex. Property of the family of Malcolm Fraser. A suite of **three 18th century Irish silver two handle cups**. Each with contemporary coat of arms. Dublin, c. 1750. Provenance: Sotheby's, December 1994, lot 699 and 670. **Price for the collection: \$16,000**



Top left: A Victorian novelty **silver cat cruet**, to include **mustard pot** and **two casters**. Robert Hennell, London. 1860 **\$18,000**

Top right: A very rare Victorian novelty silver mustard pot, modelled in the form of a seated monkey. EC Brown, London. 1867. **\$24,000**

Bottom: A very rare pair of Victorian silver figural salts, modelled in the form of a couple holding flower baskets. Walter and John Barnard, London. 1886. **\$32,000**

Antiques for *animal lovers*

SPECIAL FEATURE



**“Royal Doulton
‘Kateroo’ figures**
(combination cat/kangaroo)
yellow and green glaze
with glass eyes.
Modelled by Charles Noke
from original design by
D H Souter, c. 1920.
Height: 32.5 cm.
\$8,000 each
Alan Landis Antiques



A Continental silver and enamel box
of slender rectangular form with an image of a
hound with bird c. 1880. Weight 69 gm.
7.5 × 5.5 cm. **\$395**
Eaglemont Antiques



**Eric John Smith
(Aust., 1919–2017).
[Cat And Mouse]**
c. 1960s. Oil on board, signed
lower right, 26.5 × 31.5cm.
Framed. Eric John Smith's work
is represented in the AGNSW and
NGV. Item #CL198-157.
\$1,650
Josef Lebovic Gallery



**Continental, articulated silver pill
box** (possibly Dutch) in the form of a
fish, c. 1880. **\$1,695**
Lauder & Howard Antiques & Fine Art



**[Chinese Tobacco
Advertisement With
Woman Playing Golf
And Pekingese Dog]**
c. 1930s. Original colour
process lithograph, text in
Chinese and artist's chop
in image lower right, 76.7 x
50.8cm. Major creases, stains,
slight perforations, foxing and
soiling, original tarnished brass
edging to top and bottom, with
rope loop to top for hanging.
Provenance: Antique Shop,
Hong Kong, c. 1999.
Very rare period image of
an Asian woman with a golf
club and this is an original
issue from the 1930s not a
reproduction. Item #CL182-33.
\$2,650
Josef Lebovic Gallery



Rare Brass Dog Collar with contemporary
inscription; “Willm Hooper North Nibby
Glorshire 1788” English c. 1780
5cm x 18.5 cm. **\$2950**
Trinity Antiques



A very rare collection of six veterinary school plaster teaching models allowing students to understand the finer points of each animal type. Made between 1885 and 1900 by Max Landsberg of Berlin. The whole collection in lovely old state for sale individually at **\$3,750 each**, or **\$20,000 for the collection of six.** *JB Hawkins Antiques*



A menagerie of Victorian and Edwardian animals.

Back row: A Victorian owl pepper and a Victorian cockatoo decanter. Maker: Alexander Crichton, London 1882. Front row from left: A Victorian silver budgerigar scent bottle. A Victorian silver parrot pepper. An Edwardian silver sparrow pepper. A rare cockatoo pepper. All fully hallmarked English silver c. 1890-1910.

For the collection: \$39,000. Please enquire regarding individual pieces. *Lafite Fine Silver*



Finely patinated bronze greyhound, attr. to Jules Mêne c. 1890. **\$2,485**
Lauder & Howard Antiques & Fine Art



Lionel Lindsay (Aust., 1874–1961). The Black Cat 1922. Wood engraving, signed in block lower right, signed, editioned 75/100 and titled in pencil in lower margin, 18.2 × 15.2cm. Slight stains to upper edge of image and margin, minor crinkles, old mount burn.

Ref: Mendelssohn #121. Held in NGA; NGV; AGNSW. Lindsay created approximately 160 wood engravings covering a wide range of subjects which included only seven images of cats. Item #CL199-90. **\$1,850**
Josef Lebovic Gallery

“MAN’S BEST FRIEND”

DAWN DAVIS - EAGLEMONT ANTIQUES

The human preoccupation with dogs stretches well back to the ancient world, in fact a study of dog DNA has shown that our best friend may be our oldest one. It has been said that the first use of the phrase “man’s best friend” can be attributed to the King of Prussia, who in 1789 said “The only, absolute and best friend a man has in this selfish world, the only one that will not betray or deny him, is his dog.”

History tells us that dogs were brought into fashionable England with the Restoration of the monarchy in the 17th century under King Charles II, whose preference was for dogs then called “black & tans”, later named after him. The King Charles spaniel was the favoured breed of dog of mid-19th century England and that of Queen Victoria. Although she owned many pets, it was Dash who was her first true love, owning him before she met and married Prince Albert in 1837.

Following Landseer’s painting in 1836 of her most favourite dog, Dash went everywhere with Queen Victoria and became famous in his own right, appearing in many paintings and pottery figures of the period. Landseer secured himself a lifetime of royal patronage due to his artistic ability and fondness of animals achieving great admiration of Queen Victoria and Prince Albert.

Hence in Victorian society, dogs were well-loved and important members of the family and a nation of dog lovers was born with all manner of items related to dogs highly sought after.

The opportunistic potters of Staffordshire saw a chance by modelling pairs of spaniels, which were produced in great numbers to adorn the

mantelpieces of Britain. Jostling for attention in every colour and size they became known as “comforter” dogs. They also perfected the characteristics of greyhounds and whippets sitting on blue cushions that enclosed an inkwell or quill holder, these items serving in an era when letters were written with a quill and ink, just to name a few. Today, dog related antique paintings, dog figures, dog collars and other dog related items still retain their charm and appeal being avidly collected. As every dog owner or dog related collector can attest to, the sight of a happy dog wagging his tail, or sitting on the mantelpiece who cannot wait to meet you at the end of the day, is one of life’s most wonderful experiences.

A charming portrait of
a seated gentleman with
his favourite hound.
Artist Unknown.
Oil on canvas
in a giltwood frame.
c. 1920. (88 x 77cm)
\$4,000



Lauder & Howard Antiques & Fine Art

18th, 19th & 20th century British & Continental furniture; Australian Colonial furniture. Bronzes, glass and porcelain. Pictures to 1950. Selected vintage and old carpets and textiles.



Mark Howard
Leslie Lauder
185 Campbell Street
Hobart TAS 7000
03 6289 6946
0412 095 110
enquiries@lauderandhoward.com.au
www.lauderandhoward.com.au
Find us on Facebook & Instagram

Open: Wednesday to Saturday
10am – 5pm, Sunday 1pm – 5pm



Mid Victorian rococo revival **walnut centre table** with original specimen marble top. c. 1860. **\$9,985**



Rare, Gillows rosewood **table vitrine**. c. 1830, the design based on their famous flower tables. **\$4,985**



Finely inlaid **calamander work box**, inlaid with brass, mother of pearl and paua shell. c. 1870. **\$3,850**

**"The Sheltered Village:
Cassis, France"** oil on
board. c. 1920 by Sir John
William Ashton, R.O.I.,
prov. Sidney Ure Smith.
Image size H360 x W440cm.
Frame H560 x 630cm.
\$13,985



Exceptional **Napoleon III red bouille wine table**, the top
revolving. c. 1860. **\$16,985**



George III yew box and rosewood work table. c. 1790, in the
manner of Gillow. **\$7,850**

Lee Hardcastle Antiques

Lee Hardcastle has a strong passion for the finer details in antiques and their design, his interest in the antiques world started almost 35 years ago from Northern England where he originally hails. Lee developed an excellent grounding in the Antique world through researching, trading and working at antique fairs frequented by an industry established group of peers who possessed an excellent antiques pedigree. Having worked across an extremely broad range of antique pieces, it became apparent quickly that Lee's greatest interest was in the higher end stylish furniture market, Lee quickly built a strong reputation for holding higher calibre stock that he traded and exhibited throughout this market.

Lee's specialities include English furniture, Natural History, Asian Art, unusual objects for the real and avid antique collector



Lee Hardcastle
PO Box 231
Botany NSW 1455
0410 612 319
leehardcastleantiques@ gmail.com

Open: By appointment only



A **English Regency Side Cabinet** in the manner of James Newton. The Veneto marble top supported by two door ebonised cabinet of brass inlay and fine cast mounts. Mercury mirrored glass to doors supported on lion paw feet in the Egyptian manner inspired by Thomas Hope design. (H880 x W950 x D300mm). c. 1815. **\$ 18,800**



A fine **English Two Tier etagere Table** of fine form in Zebra wood. The fine solid Zebra wood with cast Ormolu gallery support on twist supports, parcel gilt detail and ebonised mouldings terminating on fine cast orbs. (H650 x W280 x L470mm). c. 1840. **\$4,500**

A fine pair of Stamped Gillows of Lancaster and London **Mahogany Hall chairs**. c. 1820.

The finely carved shell backs C scroll decoration and well executed flutes supported on a shell scollop seat with C scroll decoration with turned out swept legs to enhance the overall imposing design, fantastic patination and with Gillows Lancaster stamped on seat rails on both chairs.

Height: 33.86 in. (86cm)

Width: 15.75 in. (40cm)

Depth: 15.75 in. (40cm)

\$16,000



An **English Egyptian Clock of Isis**. In manner of Thomas Hope.

Fine Gilt Ormolu mounts of Zeus with thunder bolt details, the ormolu mounts of bulls heads to sides. Fine English casting and fusee movement with original chain. Signed plate Nicole Gt Portland Square Str. Made for William Nicoll 117 Portland Street London England.

c. 1815. (H37.5 x W13.125 x D20cm). **\$29,000**



A **Bronze Buddha Hand** Late 17th /18th Century Cambodia.

The hand in Vitarka Mudra with the circle formed by the thumb and index finger the sign of the wheel of Law. Finely cast details on the hand with fine cast bracelet to the wrist traces of original gilt in various areas and excellent overall colour to all the surface showing deep wonderful patination to the bronze. Ex private collection. (H20 x W10cm). **\$4,500**

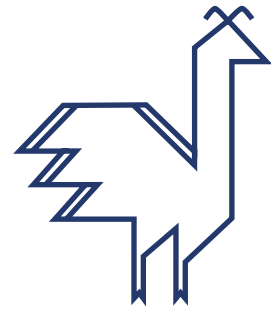


A Cambodian, **Khmer Head of Vishnu**

Banteay Srei Style, 12th Century. Conical headdress with fine carving details typical full lips and well shaped face superb Museum quality artefact. Conservation work evident and old repairs consistent with age of the object. Ex Private collection of South East Asian art. (H33 x W23 x D16cm). **\$24,000**

Nomadic Rug Traders

Dealers since 1975 specialising in antique oriental rugs, carpets and kilims, Southeast Asian textiles and tribal art. We offer expert cleaning and conservation and are Government approved valuers under the Cultural Gifts Program.



Nomadic Rug Traders
Ross Langlands
Irene Langlands
125 Harris Street
Pyrmont NSW 2009
02 9660 3753
0407 244 104
info@nomadicrugtraders.com
www.nomadicrugtraders.com

By appointment only



Hinggi, nobleman's hip cloth, warp ikat technique, first half 20th century. Rende, east Sumba, Indonesia. Ex. Old Dutch collection. These men's cloths were made for the royal households in East Sumba regencies and were important in exchange and as family heirlooms. c. 1930. (L230 x W127cm). **\$5,500**



Baluch salt bag, various supplementary weaving techniques, c. 1900. (60 x 40cm), eastern Persia. All tribal groups produced a great variety of beautifully woven domestic items that were both functional and decorative. **\$440**

Shekarlu rug (detail), knotted pile rug, c. 1860. (250 x 182cm) the Qashqa'i, southern Persia. The Qashqa'i are a confederation of tribes and weave what many consider to be the most beautiful of all Persian tribal weavings. The rug is in good pile but has some damage. **\$8,800**



Melas prayer rug, knotted woollen pile, c. 1870. (140 x 108cm), south western Turkey. A striking feature of rugs from this coastal region is the extensive range of natural dyes incorporating a beautiful lightfast yellow. **\$8,800**



Kuba rug, knotted woollen pile, c. 1870. (160 x 100cm), the eastern Caucasus. The centipede-like motifs seen here in the two octagonal medallions derive from 17th and 18th century Caucasian carpets of stylized dragon and phoenix design. **\$9,900**

Peter Walker Fine Art

Specialises in the sale of early Australian paintings and items of historical interest as well as contemporary art. Clients include major regional and state galleries, libraries and private collectors from around Australia and overseas.

Helpmann Academy, Chair

National Museum of Australia, Council member

Approved Valuer Australian Government's Cultural Gifts Program

PETER
WALKER
FINE
ART

Peter Walker
101 Walkerville Terrace
Walkerville SA 5081
08 8344 4607
0418 552 548
info@peterwalker.com.au
www.peterwalker.com.au



Martin Sharp (Australian 1942 - 2013)

Adelaide Festival, Pavilion of Death Dreams and Desire, 1982

Screenprint on waterproofed linen. (H240 x W120cm)

Monogrammed in the print. **\$3,850**

Martin Sharp was one of Australia's greatest pop artist from the early 1960's with an international reputation, not least for his contribution to the covers of London and Australia's OZ magazine.

The Adelaide Festival commissioned Sharp to design the 1982 Festival poster and these large screen-prints were used as street banners at each for the 1982 Adelaide Festival venues. This banner is of particular importance as it was used at the central location and pavilion for the Festival beside the Adelaide Festival Centre. These artworks were hand-printed and very few of this large format are still in existence. There is one in the collection of the Powerhouse Museum in Sydney. Very rare.



A very rare 2nd Century AD **Gandhara sculpture of Yakshi**. Yakshi is the female attendant of Kybera, the Hindu god of wealth. Height: 29 cm.

Exhibited: Pakistani Embassy, Canberra, 1969.

Illustrated: A Perspective in History and Art from Ancient Times. Pakistan, 1969, p.36. **\$2,250**



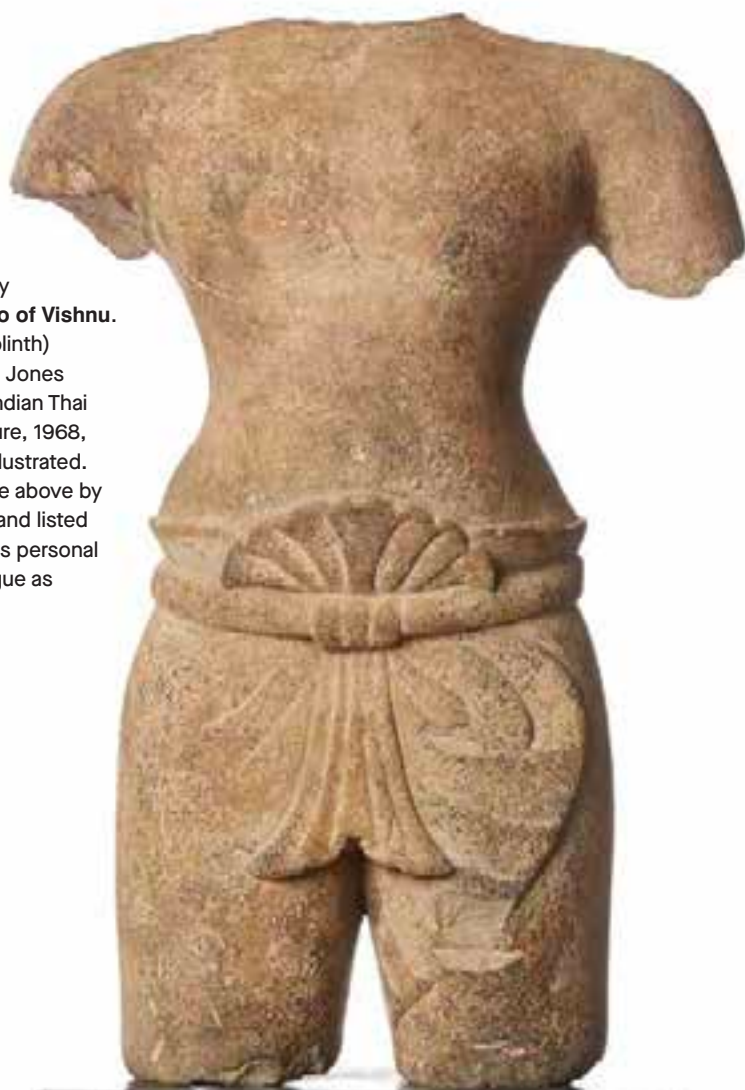
Two drawings from The Museo Cartaceo of Cassiano Dal Pozzo (1588 – 1637)

Both drawings, Rome. c. 1600. Impeccable provenance including Pope Clement XI, King George III and many prominent collectors. Full details please contact us. Framed together and tipped onto the sheet by King George III librarian Richard Dalton. Total sheet size (380 x 480mm).

\$7,800

The left-hand drawing is Italian, Rome, late 16th/early 17th century: Study of a classical relief sculpture of a priest holding a cornucopia. Pen and brown ink with grey wash over black chalk laid down within double ink mounting lines, and again laid down. Inscribed on the old mount 'Roma in Aedibus Verospis' indicating that the depiction is of a relief in the Palazzo Verospis in the Via del Corso in Rome. The palace was stripped of its ancient art in the early 19th century after it was sold to the Banco Marignoli for offices

The right hand drawing is of the Head of the same relief
Black chalk & grey wash, with traces of old inventory number no. 467



**A Rare 12th Century
Khmer stone torso of Vishnu.**

52cm (66cm incl plinth)
Provenance: David Jones
Gallery, Sydney - Indian Thai
and Khmer Sculpture, 1968,
Catalogue No.47, Illustrated.
Purchased from the above by
James Fairfax, AC and listed
and illustrated in his personal
ring-bound catalogue as
item number 4.

\$18,500



The Foot Bones from an Extinct New Zealand Moa. Mid 15th Century
AD or earlier. With original box and a wonderful provenance including
a 1930's letter and photo from a London rare animal dealer discussing
these bones. For the collector who has just about everything! H32cm.
\$6,500

Rutherford

Rutherford has over sixty years of experience in fine antique jewellery and silver, earning them a reputation for one of the best ranges of unique and beautiful Victorian, Edwardian, Art Deco & Retro jewellery in Australia.

As well as their jewellery, their flagship store on Collins Street showcases an extensive collection of 18th, 19th & 20th century English silver. Three doors away, their Pearl shop carries the beautiful Australian South Sea pearls as well as black and gold South Sea pearls from select farms all over the world.

Visit rutherford.com.au to view over 2,000 pieces or visit one of their four stores across Melbourne.

View their online catalogue at www.rutherford.com.au/pages/catalogue

Please call or visit their store to receive your copy of their newly released 52 page catalogue.

RUTHERFORD

EST. 1962

Wesley Rutherford
Rutherford Jewellery
182 Collins Street, Melbourne
03 9650 7878
info@rutherford.com.au

Rutherford Pearls
174 Collins Street, Melbourne,
03 9650 6277
pearls@rutherford.com.au

Rutherford Camberwell
797 Burke Road, Camberwell
03 9882 4686
camberwell@rutherford.com.au

Rutherford in the Block Arcade
Block Arcade, Shop 17,
282 Collins St, Melbourne
03 9650 4888
theblockarcade@rutherford.com.au

www.rutherford.com.au

Refer to our website
for trading hours



An antique **platinum ring** with a centre **3.15ct Old European cut diamond** with GIA report, and three small diamonds to each shoulder. c. 1920. Central diamond 0.9cm approx diameter, ring size J 3/4. Small cracks in shoulders repaired and central setting claws retipped in 2020. **\$45,000**



A French Art Deco platinum geometric filigree style panel bracelet with mill grain edging, fastening with an 18ct white gold concealed clasp and safety chain. c. 1920. (L18.5 x W1.5cm approx). Origin - French. Excellent original condition. **\$33,500**



A pair of **20ct yellow gold navette shaped earrings** with a small pearl and blue enamel to the centre, and small locket compartments to the back. In original fitted square box. c. 1880. Height 4.3cm, Width 3cm approx. Excellent original condition. Retailed by Henry Birks & Sons of Canada, Canada. **\$3,500**



An elaborate **platinum and diamond necklace** made as a series of articulated, slightly curved bars separated by small old-cut diamonds, with seven drop sections to the front c. 1920. Length approx 40cm One diamond replaced with like in 2020. **\$14,500**



A **platinum, diamond, and ruby bar brooch** in original box. Ruby accompanied by a GIA report. c. 1920. 8.2cm long approx, 3mm wide approx. Excellent condition, ruby replaced with a new stone in 2020.5. Retailed by A. Hersant of Paris, France. **\$14,500**



18ct white gold three stone diamond ring with a central GIA certified 0.88ct transition cut diamond. c. 1925. Finger size M 1/2 Small crack in one shoulder repaired in 2020. **\$13,500**

Simpson's Antiques

Andrew Simpson established Simpson's Antiques in 1978, in Queen Street Woollahra, and was one of the first antique dealers to specialise in 19th century Australian cedar furniture. He is currently the country's foremost dealer in early colonial furniture, consulting on, Australian Colonial Furniture and Decorative Arts for collecting institutions and private clients nationally. Andrew Simpson was instrumental in the formation of the Australiana Society, a forum for collectors and enthusiasts alike.

Andrew was a co-author of *Australian Art Pottery 1900-1950* (2004) and *Nineteenth Century Australian Furniture* (1985) and *Australian Furniture Pictorial History and Dictionary 1788-1938* (1998) the latter two have become the standard references on the early history of furniture making in this country. Simpson's Antiques has supplied items to the following cultural institutions: ACT Museums and Galleries, Canberra; Art Gallery of South Australia, Adelaide; Historic Houses Trust of NSW, Sydney; Mitchell Library (SLNSW), Sydney; National Gallery of Australia, Canberra; National Museum of Australia, Canberra; National Portrait Gallery, Canberra; National Trust of Australia (NSW); Powerhouse Museum, Sydney; Queensland Art Gallery, Brisbane; State Library of Queensland, Brisbane; Tasmanian Museum and Art Gallery, Hobart; The Australiana Fund, Canberra and Sydney.



Andrew Simpson
PO Box 643
Woollahra NSW 1350
0404 051 999
simpson@casuarinapress.com.au
www.australianantiques.com.au

By appointment only



An early colonial Australian cedar and Tasmanian blackwood Hall Stand, 19th century patina, c. 1850.
(197 x 78 x 32cm). **\$2,500**



An early colonial Australian cedar **Sideboard** of compact size, featuring Huon pine stringing, and a deep left drawer and a pair of drawers to the right of the centre drawer, all with ebonised knobs, and with a band of ebonised beading below. Attributed to James Penman a convict cabinetmaker who worked at Riccarton in northern Tasmania and provenanced to Streansshal, more information can be found on p.122 in *Early Colonial Furniture in NSW and Van Diemen's Land* as well as p.135 in *Nineteenth Century Australian Furniture*. Original 19th century patina, c. 1840. (77 x 111 x 60cm). **\$22,000**



An important early **colonial Australian cedar Sofa** with a superb scroll carved back featuring a central shell motif and resting on spiral carved legs and brass castors, 19th century patina, c. 1845. (242 x 132 x 55cm). **\$55,000**



An English George III mahogany three tier revolving **Dumb Waiter**, c. 1810. (H127 x 61cm). **\$950**



An early colonial Australian cedar **Linen Press** by Andrew Lenehan and with a paper label showing his address to be 271 Castlereagh Street, Sydney, and featuring a triangular pediment and ebony knobs, 19th century patina, c. 1845. (242 x 132 x 55cm). **\$9,850**



The Antique Guild

A pair of fine retail galleries showcasing quality furniture, silverware, art glass, Asian and African art and 20th century decorative arts. Specialising in fine cocktail jewellery and jewels ranging from the Georgian period through to current day. Purveyors of Tiffany Studios and rare Tiffany and Company decorative arts and jewellery.



Christopher Hughes
Andrew Butterfield
38 Charlotte Street
Brisbane QLD 4000
07 3012 8771
info@theantiqueguild.com.au
www.theantiqueguild.com.au

Open: Monday to Friday
10am to 6pm,
Saturday 10am to 4pm



A monumental **suite of Italian modernist furniture** by famed Milanese designer, Vittorio Dassi (1893-1973).

This 1950s suite is comprised of an oversized sideboard with original illuminated mirror, a secondary taller sideboard, and a marble-footed dining table with four accompanying chairs. Each piece features carved and gilded panels in the mid century Milanese taste, along with its original locks and keys. Three piece suite. c. 1950.
\$24,500





A Pre-Columbian, slip-glazed earthenware tripod vessel from the Colima people, circa 250BC. Measuring 33cm in diameter. **\$7,500**



Hand wrought, shallow, **sterling silver bowl** by the 'Kalo Shops' of Chicago and New York; a women's run workshop in the early 20th century. The beautifully hammered bowl features a period Art Nouveau monogram 'F de FF' and is fully signed to the underside. The markings indicate manufacture between 1912 and 1916. **\$1,250**



A very fine and versatile **French platinum brooch** with detachable dress pins and earclips. The floral spray is stamped with French assay marks for both platinum and 18 karat gold. Designed to be worn in three ways. Entirely set with modern brilliant and baguette cut diamonds weighing an impressive 9.10 carats. c. 1955. **\$35,000** with independent appraisal.



Retro period pair of 18 karat gold, amethyst, and ruby earrings in bold fan shape. The pair have a post and omega clip to the rear. c. 1960. **\$5,900** the pair with independent appraisal.

The Find Antiques

The Find Antiques specialises in high end 18th and 19th century French Antiques and Objet d'Art. With showrooms by appointment only in Noosa Queensland and Melbourne Victoria, owner Danielle Rusko has also created a boutique online platform for Interior Designers, Stylists, Private and Trade clients Australia wide where they can source the most original and unique pieces including European decorative and fine antiques

The Find Antiques is available across Australia for residential and commercial projects, property styling and offers sourcing, procuring, sale and hire alternatives.



Danielle Rusko
0459 221 378
0459 221 378
1/15 Lionel Donovan Drive
Noosaville QLD 4566
info@thefindantiques.com.au
www.thefindantiques.com.au

Find us on
Facebook and Instagram
@thefindantiques_

Opening hours:
Online and by appointment



A Fine **French Napoleon III** Gilt Bronze and White Marble Mantel **Globe Clock with Putti**.
c. 1860. France.

A fine French Napoleon III Gilt Bronze and White Marble Globe Clock with an 8-day bell strike lever movement, held within the deep blue enamelled bronze orb as an iconic representation of the sky with a myriad of applied bronze stars.

The face of the clock depicts roman numerals in gilt bronze with the hands shaped as arrows. One gilt Putti is sitting atop the orb, holding up the eternal flame which represents the light that love brings into our lives. The second Putti carries a sharp golden point arrow which represents uncontrollable desire when wounded by his golden arrow.

The white marble base is decorated with fine gilt bronze threading and gilt bronze mounts of acanthus leaves and is set upon four (4) toupee feet. (H30.5 x W20.8cm).

\$5,950



Directoire Style Walnut Cylinder Top Writing Desk

c. 1810. France. A large Directoire period cylinder top desk in walnut and beautifully figured burr walnut veneer. Having a flecked grey marble top above three drawers, a fitted interior with four drawers and original leather top slide, two long drawers below and raised on square section tapering legs with brass capped feet.

(H120 x W119x D59cm). **\$7,800**



Vintage Italian Bronze and Porcelain Six (6) **Branch Chandelier**

c. 1920's. Italy. Beautiful Large Italian Original 6 Branch Gilt Bronze and Porcelain Chandelier with hand painted delicate pastel coloured Porcelain Flowers, Roses & Bobeches of Pink and Mint Green Accents. Elaborate cast scrolled arm supports. Professionally rewired to meet Australian Standards. **\$3,900**

Note: Matching Vintage Italian Pair of Wall Sconces Available Separately



An Outstanding **Louis XV Style French Floral Marquetry Serpentine Bureau Plat**. c. 1825 - 1850. France.

Designed in the Louis XV manner, of free standing form, constructed using grained walnut, and elaborate foliate gilt bronze mounts; rising from swept slender cabriole legs, and dressed with gilt bronze sabots. The top adorned with serpentine sides and cantered corners, stained floral marquetry of fruitwood, mother-of-pearl and ivory inlays around a decorative inset of gilt tooled original tan Morocco leather. The shaped frieze housing two lockable oak lined drawers of excellent proportions. (H75 x W134 x D70cm). **\$28,800**



Set of Four (4) **Empire Style Mahogany side chairs** with Swan Neck Carvings. c. 1890. France. Of scooped or Gondola type with drop in seats upholstered in brocaded silk boarded by matte bronze studding. Forelegs are tapered straight with motifs of rosettes and palmettes and back legs being square in section and flare outward. Provenance: The Estate of the Late Ainsley Gotto – Lawsons Auctioneers Sale 8800 - Lot 42 (H82 x W51 x D40). **\$4,800**

The Woodshed Antiques

Graeme has traded in antiques for over 35 years with shops in both Armidale, NSW and Ballarat, Victoria and presently operates by appointment from his workshop in Ballarat.

Graeme also exhibits at most city and regional antique fairs throughout Australia displaying a variety of furniture ranging from Australian Colonial, English Georgian, Regency and Victorian periods.

Through the workshop Graeme also offers a restoration service specialising in leather desk replacement with not just the traditional leather but also a hand coloured leather which gives the aged and worn look that is appropriate for period antique furniture.



Graeme Davidson
10/903 Doveton Street
Ballarat VIC 3350
0408 659 249
woodshedantiques@bigpond.com

By appointment only



18th Century Carved Oak Bible Box on Stand. England. c. 1750.
Carved front and plain sides with carry handles, single carved drawer
and supported on cabriole front legs.
(W94 x D54 x H100cm). **\$1,950**



Brass Bound Camphor wood Trunk
China. c. 1880. Anglo Chinese trunk in excellent condition
all single board construction with original hardware, locks
stamped Singapore. (W99 x D58 x H50cm). **\$1,100**

Cedar Two Height Bookcase

Australia. c. 1860.

Impressive cedar bookcase of large proportions in good original condition, two glazed doors above two drawers and cupboard doors below, adjustable shelves to the top. Origin from the offices of Ballarat's first solicitors established in 1853. (W196 x D51 x H276cm).

\$7,500



Large Farmhouse Kitchen Table.

France. c. 1840. Slight D-end three plank pine top on oak tapering legs and side rails with pegged construction. Will seat 12 people comfortably. Good patina and pleasant mellow colour. (L315 x W88 x H74cm).

\$4,500



George III Mahogany Bow Front Sideboard

England. c. 1780. The rectangular bow front top with two centre frieze drawers flanked by two deep drawers one being a fitted cellarette. Raised on six square tapering legs with boxwood and ebony string inlay decoration and resting on spade shaped feet.

(W99 x D58 x H50cm). **\$2,250**

Trinity Antiques

Trinity Antiques; Purveyors of quality jewellery, Australian gold treasures and desirable small objects.

Trinity Antiques, formally of Perth and now represented in the Armadale Antique Centre, Armadale, Victoria, has a history of identifying and placing significant Australian treasures in most National and State based Museums and Galleries. With a reassessment of Australian treasures, colonial jewellery offers a unique opportunity to enjoy items crafted from Australian gold and leave no carbon footprint.



Trevor Hancock
0431 226 343
tcfhancock@hotmail.com



18 carat gold Etui. Presented in original case it consists of Scissors, Thimble, Needle Case, Needle and a rarely included hand cut perfume bottle.
French. c. 1850. (13.5 x 6.5 x 2cm). **\$4550**



Tortoise Shell Snuff Box inlaid with silver and mother of pearl. Inscribed "Presented to the Revd; Mrs Tho's Hervey 1800 by Mr Wm Kaye on the wedding day of his brother, Peter, with her daughter, Anne my mother, Shine Fairfield. March 14th 1839"
England. c. 1800. (2.6 x 7.5 x 5.0cm). **\$975**



Suffragette Brooch. Set in 18 carat gold. A Centre carved Amethyst flower has an Old Brilliant cut White diamond stamen. Two carved Green Chrysoprase leaves on either side. The ends are each set with eight Rose Cut diamonds. England. c. 1920. (2.3 x 5.7cm). **\$11,050**
The Suffragette Colours were Purple for Loyalty and Dignity, White for Purity and Green for Hope.



Art Deco Platinum set Brooch. Featuring a natural sapphire set en cabochon surrounded by 52 old cut diamonds. France. c. 1920. (3.3 x 3.00cm). **\$12,000**



Lady's Travelling Fruit Utensils.
Blue stained Mother of Pearl handles with silver fork and knife. London 1810. Moses Brent Knife (17.0 x 1.6 cm) Fork (14 x 1.5cm). **\$950**

Antiques for *lovers of fauna & flora*

SPECIAL FEATURE



Antique 15ct Double Sparrow Seed Pearl & Ruby Brooch

This graceful Victorian Brooch in excellent condition depicts 2 Sparrows in flight. Each is set with 24 silvery white Seed Pearls for the body, with a cabochon cut Ruby for the eye. One Cultured Pearl is set into the bar end. The Brooch measures 55 x 30mm with the inscription June 8, 1886. It does have matching earrings. **\$1,990**
Antique & Unique Jewels



**Very rare Victorian diamond
brooch "En Tremblant" to tremble.**
The middle section is set on a spring and quivers with movement to catch the light. Victorian c. 1880s, silver & 9ct rose gold set with 5.05cts rose & old mine cut diamonds. In excellent condition 6.5 x 5.4cm in size isn't marked but is probably French. **\$7,990**
Chiltons Antiques



Giardinetto Brooch. Natural emeralds, Synthetic rubies and 32 rose cut diamonds. Set in 9ct gold and silver. French c. 1920 3.5 x 5.5cm. **\$6,950**
Note: the use of synthetic rubies and emeralds was common after the First World War due to scarcity.
Trinity Antiques



Ellis Rowan (Aust., 1848-1922).
A Bunch Of Australian Wild Flowers
1888. Colour lithograph, signed and dated with text including title in image lower centre, 571 x 37cm. Minor crinkles and folds with cracking to image, slight tears to lower edge. Text includes "This picture is the copyright property of the proprietors of the Town and Country Journal."
Item #CL169-49. **\$1,350**
Josef Lebovic Gallery





Edwardian Spider Brooch

This very well crafted brooch features a purplish-pink oval cut tourmaline. It is millegrain set, 0.70 carats in weight. The head of the spider is one round cut Sapphire, claw set, 3.0mm in size & vivid pink in colour. The item is hand-made. c. 1905. **\$1,290**
Antique & Unique Jewels



Paul Jones (Australian, 1921-1997). [Flowering Gum]

1984. Vintage silver gelatin photograph, signed, editioned 1/10 and dated in ink verso, 39.3 x 26.5cm. Slight scuffing to image upper left, old tape to margins. Sydney-born Paul Osbourne Jones studied art at East Sydney Technical College and the Julian Ashton Art School. He worked in a department store as a commercial artist before enlisting in the army in 1941, where he spent some time in New Guinea. While on leave Jones painted a still life of flowers and included it in an exhibition of the Society of Artists, attracting the attention of Professor E.G. Waterhouse, a world authority on camellias. Waterhouse invited him to illustrate his two books on camellias, which launched Jones' career as a botanical artist. Jones was awarded an OBE for his services to art in 1971, the same year his book *Flora Superba* was published. In 1976 he published another major work, *Flora Magnifica*. Later in his career Jones began taking photographs of botanical studies. Ref: NLA. Item #CL185-107. **\$1,650**
Josef Lebovic Gallery



18ct rose gold & silver French flower pendant set Victorian era c. 1870. With open photo back, glass hinge opens up. Set with small seed pearls. The piece is in good condition and is 6.7 x 2.6cm. **\$3,890**
Chiltons Antiques



14ct three time Retro 1950's handmade diamond & amethyst cluster flower. Rose gold leaves, yellow gold flower head, steel is in diamonds. Stunning very stylish in fabulous condition 7.2 x 3.5cm. **\$2,500**
Chiltons Antiques

Rhodonite, Ruby, Citrine & Pearl Modern Designer Brooch.

This very unusual Rhodonite Brooch is not antique but is so very unusual and appropriate to the current Christmas theme. It is carved to depict a leaf in a garden. It is claw set with 3 Butterflies nestling on the leaf. Their bodies are comprised of creamy white Freshwater Pearls set in white stones with Ruby eyes. A yellow/orange Citrine which has been carved into a floral shape hangs from the lower end of the leaf. The Brooch weight is 2.44grams. c. 2020. It is just beautiful! **\$2,390**
Antique & Unique Jewels



NOVELTY SILVER PIN CUSHIONS

MATTHEW LAFITE FSA SCOT. FRSA

Who doesn't love cute animals, right? Right! Well add into the mix a precious metal and an antique status with an applicable purpose and it is therefore no surprise that the cute little guys pictured are hotly contested by collectors.

Novelty pin cushions come in a wide array of forms including different animals, people and objects. The most common form of animal-type pin cushions are the pig and elephant, however the spectrum is wide and varied and price does vary significantly. For a pig in good condition expect to pay mid-hundreds and for a rat or a spider, the asking price could be mid-thousands.

Pictured below are the bulldog and rabbit and I would say they sit mid-way in the 'rarity scale'.

Also pictured is a pin cushion in the form of a fan - this would be a must have accessory for a lady in the early part of the twentieth century and certainly a talking point.

A few words on what to look for should you wish to start collecting novelty silver animal-type pin cushions:

(i) Buy the antique ones!

With the recent surge in popularity of these small pieces of silver, they are being reproduced in very large numbers. The 'new' ones are usually marked '925', or 'sterling' or often not marked at all. They are cheaply made and inferior copies of the Edwardian originals. My advice would be to steer clear of the imitators and rather focus your attention on an original. You will want to buy a pin cushion that is English and hallmarked for Birmingham (or sometimes London) and with a date letter for the last few years of the nineteenth century, right the way through to the outbreak of the First World War.



Detail of hallmark: Gourdel Vales & Co.
Birmingham 1907.

(ii) Condition, condition, condition

These pin cushions contain a small amount of silver (it is basically a 'shell' to house the cushion) and are prone to damage. You want to make sure there are no breaks, holes, splits or solder repairs - watch out for broken trunks, ears, feet and tails! You can however forgive a few dents here and there - a bit like 'marks of maturity' - also, dents are very difficult to take out and so aren't easily rectified. To have the original 'pad' (the cushion where the pin goes) is also very nice, but keep in mind the condition of this may be rather worse for wear! You can forgive an original pad appearing tatty and faded, as that lets you know it is original. Replacement pads are also common, however just check to make sure it has been a professional replacement.

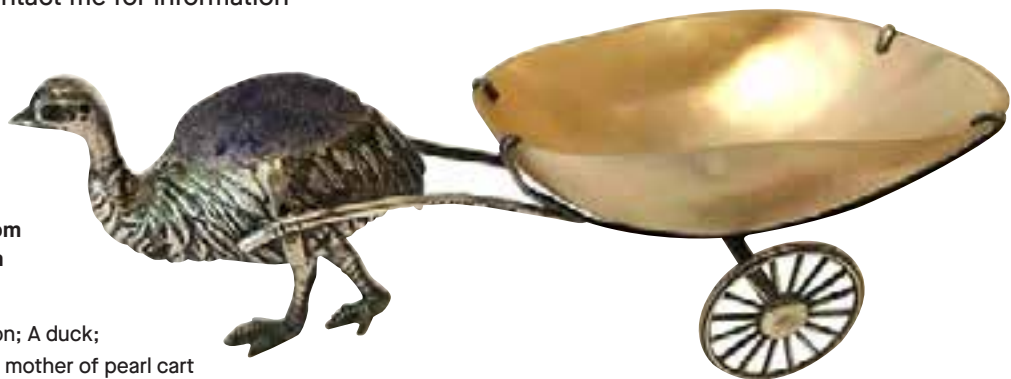
(iii) Rare as a hen's tooth

With animal pin cushions it is often about rarity. Like any collectable, the pieces that fetch the most money now, are the ones nobody wanted to buy when they were new. People went mad for pigs and elephants in the Edwardian period and as such, I see hundreds of these. Moving up the scale you get camels, swans, dogs, rabbits, polar bears, crocodiles, cockatoos, kangaroos, cats, spiders and even rats!

My advice would be this - instead of buying two pigs, pool your collectible investing funds and buy one camel. You can then move on to a dog or a rabbit and if you are feeling very adventurous - a spider (if you can find one)!

If you would like to know more about pin cushions or novelty silver please contact me for information and pricing.

Lafite Fine Silver
Melbourne, Victoria.
By appointment.
Tel. 0458 029 962
Email. info@LafiteFineSilver.com
Web. www.LafiteFineSilver.com



From top: A fine Lizard pin cushion; A duck;
A rare stag; A large size emu with mother of pearl cart

Wallrocks

Wallrocks specialise in fine 18th & 19th century European antique furniture. Established for over 45 years and with a significant family history in antiques which dates back to the early 1920s, Wallrocks are highly trusted purveyors of stunning antique pieces that range from French Provincial, Louis XV and XVI, Regency, French Empire and more.

Our antiques are selected specifically for their quality, design and craftsmanship and Wallrocks guarantees the authenticity of our entire collection. We understand the difficulties of buying online. As such we invest in the safe delivery of our furniture all over Australia and personally pack our antiques. Should our pieces arrive and are not as we've described we provide a 100% refund.



Jessica Wallrock
21 Crosby Road, Albion
Brisbane QLD 4010
07 3862 2253
0407 590 977
jessica@wallrocks.com.au
www.wallrocks.com.au



Late 18th century **English George III north country oak pot-board dresser**, the original oak plank top supported on an oak serpentine frieze with three moulded drawers and later 19th century handles supported on turned baluster legs joined by a pot shelf. c. 1790. (L172 x D425 x H870mm).
\$14,500
(includes cleaning, waxing and repairs)



19th century French **Louis XV walnut chaise longue**, the well carved back and arms in the form of shells, flowers and acanthus leaves embellished with gilt highlights around an upholstered back and seat supported on six cabriole legs. c. 1870. (L1930 x W720 x H980mm).
\$9,800
(price includes restoration, excludes upholstery)



An important **19th century marquetry cabinet** by notable French cabinetmaker Diehl, Paris. c. 1865. An exceptional French walnut, purple heart and satinwood breakfront marquetry cabinet, the original shaped and moulded marble top above a frieze inlaid with satinwood flowers above three profusely inlaid panels, the single door with central inlaid motif in the form of a vase of neo-classical form holding flowers bordered by ribbons, oak leaves, flowers, swags and a satyr in various exotic timbers of satinwood, boxwood, sycamore in a purpleheart and burr-walnut ground further bordered by geometric purple-heart and satinwood inlays flanked by a pair of coloured inlaid panels of ribbons and maple leaves.

Footnote: Charles-Guillaume Diehl (1811-1885) was a highly prestigious 19th century furniture maker, famous for his production of exceptionally designed cabinets. Of German origin, Diehl moved to Paris in 1840 and established a large workshop, which boasted a workforce of around six hundred employees by 1870. Diehl achieved success at the 1851 Great Exhibition in London and at all major international exhibitions thereafter, which garnered him a reputation for the production of high quality, unique pieces. Diehl's luxury furniture was immensely popular with both Parisian and international elite clientele and his works remain highly prized to this day; many can be found in important collections and institutions worldwide, including the Muse d'Orsay in Paris and the Metropolitan Museum of Art in New York. (H1060 x W1260 x D440mm). **\$37,500**



A pair of large **19th century French mahogany armchairs**, the moulded and carved top rail in well figured, high quality mahogany around deep buttoned leather backs, flanked by pairs of carved and moulded arms joined by a comfortable, large leather seat, raised on turned, tapering, fluted legs. These chairs have significant stature. c. 1870. (L630 x D750 x H1000mm). **\$10,500**



An exceptional 19th century pair of **French marble cassioles**, of classical vase form, the beautiful green, grey and charcoal marble with finely cast original gilded bronze mounts in the form of ribbons and scrolling acanthus leaves. In superb original condition retaining original gold leaf. c. 1890. (W220 x D170 x H500mm). **\$10,500**

Wright Gallery Fine Art

Specialising in British 19th century art. European Old Master and Australian 20th century art, icons and antiquities. We stock original oil and watercolour paintings, drawings and a comprehensive selection of affordable prints dating from circa 1600s to the mid 20th century.

Wright
GALLERY
FINE ART

Wright Gallery Fine Art
6 Post Office Street Pymble,
NSW 2073
0408 602 436
art@wright-gallery.com
wright-gallery.com

Follow us on instagram
@wright_gallery_fine_art

Circle of James Arthur O'Connor (Irish 1792-1841). **Father and son fishing, c. 1830.**
Oil on academy board. Framed Size: (H33 x W40.5 x D4.5cm). Image Size: (H13.5 x W21cm). Very good condition, recently cleaned, old varnish removed and re-varnished. No paint loss to the picture, slight old retouching in dark green foliage.
\$15,000

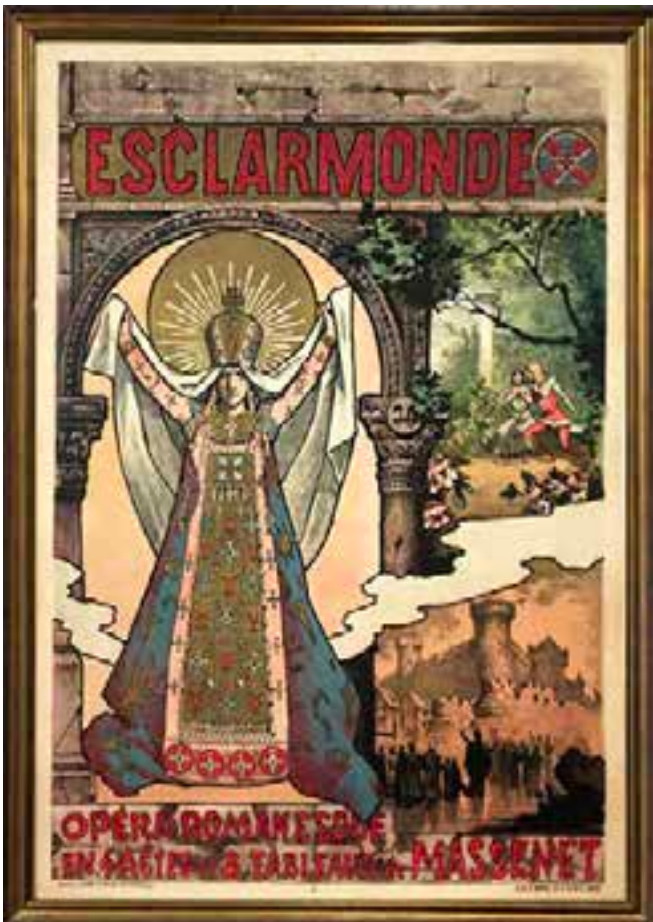




Samuel Elyard (British/Australian 1817-1910). **Yard of Nowra**. c. 1890. Watercolour and bodycolour on paper, title and notations verso. Framed Size: (H52 x W62 x D7cm). Image Size: (H24.5 x W34.5cm). Good condition, presents very well, bright strong colours, no foxing or discolouration apparent. Scuff to edges which does not show and are under matt. Small hole, bottom left and a small crease top left in tress foliage, both hardly visible. **\$7,500**



British School, Circle of The Camden Town Group / The London Group Movement. Market Scene. c. 1910. Oil on board laid on wooden panel. Framed Size: (H38 x W 32.5 x D2.5cm). Image Size: (H26.5 x W21cm). The painting is in very good condition, it has recently been cleaned, old varnish removed and re-varnished. It has been framed in a period oak frame with museum conservation glass. Provenance: Private Collection Sussex England. **\$5,000**



Alfred Choubac (French 1853-1902). **Esclarmonde Opera Poster**, 1889. Lithograph on paper. Framed Size: (H126.5x W89.5 x D3.5cm). Sheet Size: (H118 x W81cm). Poster is in a good condition with some slight overall even toning that is commensurate with age. Framed under glass. Provenance: Private Collection Paris, France. Private Collection London, UK. **\$1,400**



Russian School. Orthodox Icon of Saint Nicholas surrounded by scenes from his life. c. 1890. Tempera and gold leaf on wooden panel. (H27 x W22 x D2.5cm). Icon has minor losses, with overall wear consistent with age and use. **\$3,500**

Antiques for *the sporting enthusiast*

SPECIAL FEATURE



The Brightest Star In The Stratosphere Of Fun! [Skiing, Australia]

c. 1950s. Colour process lithograph, 61.1 × 41.9cm. Minor surface loss to upper centre of image, repaired creases, foxing. Linen-backed.

Text continues "Here's Thredbo, the king of variety! More bowls! More trails! More supertrails! The Thredbo skier in your community is a good person to know. Important fact: some resorts stop around our half-way mark, but not this monarch of mountains. It continues downward to new levels of pleasure-bent skiing. How's this for starters? Thredbo has its own custom-built beginners base to brighten up your leisure! It's said and done. Thredbo. On happy occasions, it's wise to ski." Item #CL197-71 **\$2,650**
Josef Lebovic Gallery



15ct gold seal with reversible cornelian engraved intaglio of jockeys riding, c. 1830, height from top to bottom 4.6cm
\$1,295

Greene & Greene



Back left: A rare **English hallmarked Victorian emu egg cup**, three naturalistic modelled bird feet with waisted wing decoration to body. Frederick Brasted, London 1880. H: 11cm **\$5,500**

Back right: A **George V Neoclassical style fine parcel gilt jewellery box** with green spinach jade insert panel to sides and pierced dome lid. William Hornby, London 1914. (H10 x W7.5 x H6cm) **\$5,500**

Front left: A **Victorian silver novelty desk stand**, modelled in the form of a seated retriever holding a top hat. Charles Rawlings, London 1848. **\$14,000**

Front right: A rare George III whisky flask (Reserved). H: 12cm
Lafite Fine Silver



See The Australian Rugby League "Kangaroos"

1933. Process screen and letterpress, 88.3 x 57.9cm. Repaired missing portions, old folds, slight stains overall. Linen-backed.

Text includes the name of each player and their position under their photograph, and a list of matches to be played in England during the 1933 to 1934 tour of Great Britain, which took place in Paris on New Year's Day in 1934. It was the first rugby league international game played in France. Ref: Wiki. Item #CL197-25 **\$2,200**

Josef Lebovic Gallery



THE AUSTRALIAN ANTIQUE & ART DEALERS ASSOCIATION

CODE OF PRACTICE

- 1a. All goods to be sold to the public by Association members shall have a label or ticket attached to or immediately adjacent to the item in question.
- 1b. Such labels or tickets must give as much reasonable information as possible about the goods and this shall normally include such detail as:
 - * The full price
 - * A circa date of manufacture (or the actual year if hallmarked or dated)
 - * The material (eg. walnut, bronze, etc.)
 - * The maker's mark or artist's name if relevant/known
 - * Any major restoration or later additions
 - * If reproduction
- 1c. Where this is undesirable or impractical for security or other grounds the full price shall be written on a price list or in a stock book, with a full description to identify the article, and is available at all times during business hours for inspection by the public on request. N.B. in the case of 1c, there shall be a prominent notice stating: Written prices of all goods offered for sale may be examined on request by members of the public.
2. The member shall not attempt to confuse or mislead the customer or falsely describe any of the goods he/she offers for sale or seeks to purchase. He/she shall in all respects comply with the provisions of the Australian Trade Practices Act and/or any State legislation of a particular nature.
3. Description details as indicated on the label and as offered verbally shall be written on a proper invoice which shall state the name, address and telephone number of the member and date of the transaction.
4. Members shall accept responsibility for descriptions of items given to members of the public by their staff. Staff must be appraised of all the requirements of the Association's Code of Practice.
5. Members shall not make unsolicited visits to private domestic premises.
6. Members shall apply standards of fair dealing equally to the public, members or non members.
7. Members have no authority to act on behalf of or speak for the Association, save insofar as expressly authorised by the Executive.
8. Members shall not state or imply that membership of the Association is a guarantee of authenticity of any article offered for sale or that membership entitles them to any special standing insofar as authentication of articles is concerned. Responsibility for all claims or statements as to the authenticity lies solely with the member.
9. Professional valuations carried out by members (ie for a fee) shall be provided in writing, signed and dated, and worded to indicate clearly their purpose ie. for Insurance (replacement value) or for Probate (market value) in accordance with the guidelines set down from time to time by the Association.
10. Members are required to co-operate to the best of their ability with customer protection agencies (eg. the police, trading standards authorities).
11. Members shall at all times seek to advance the professional reputation and standing of the Association by acting in an honourable fashion and by promoting the knowledge and understanding of Antiques and Fine Arts within the Australian community.

DIRECTORY OF AAADA DEALER MEMBERS

Click on this link aaada.org.au/members/ to access further details about each of the following members, including contact details, websites, items for sale, dealing categories.

NEW SOUTH WALES

69 John St
Abbott's Antiques
Alan Landis Antiques
Ancanthe (Advance Australiana)
Anne Schofield Antiques
Antique Print Map Room
Au Lion Des Neiges/Tibetan Art
Ben Stoner Antiques Conservation & Restoration
Charles Aronson OAM. Life member
Chilton's Antiques & Jewellery
Christopher Day Gallery
D. G. Barsby Antiques
Day Gallery
Elizabeth Kwan Vintage and Fine Jewellery
Fellia Melas Gallery
Fritz Lintner Antiques
Grafton Galleries
Greene & Greene Antiques
Greengrass Antiques
Hordern House Rare Books, Manuscripts & Paintings
Hunters & Collectors Antiques
I. & B. Perryman Oriental Carpets
Janet Niven
Josef Lebovic Gallery
Justin Miller Art
Lee Hardcastle Antiques
Merchant of Welby, The
Nerilee Antiques
Nomadic Rug Traders
Ophir Jewels
Reflections Antiques
Simpson's Antiques
Victoria and Albert
Wright Gallery

QUEENSLAND

Hind's Antiques. Emeritus member
Lynzay Antiques
The Antique Guild
The Find Antiques
Turn o' the Century
Wallrocks

WESTERN AUSTRALIA

Brans Antiques & Art

SOUTH AUSTRALIA

Lobethal Curios and Collectors Gallery
Megaw and Hogg Antiques. Emeritus member
Peter Walker Fine Art
Tusmore Antiques

TASMANIA

Evandale Antiques
Grange Antiques
J. B. Hawkins Antiques. Life member
Lauder & Howard Antiques
Leven Antiques
Mariners Cottage
Peter Lane Gallery
Walter & Co
Warwick Oakman Antiques

VICTORIA

Antiquarian
Antique & Unique Jewels
Anton Venor Interiors
B.C. Galleries Ancient & Tribal Art
Behruz Studio
Chineur Antiques
Douglas Stewart Fine Books Pty Ltd
Eaglemont Antiques. Life member
Edward Clark Antiques
Graham Geddes Antiques
Imogene Antique & Contemporary Jewellery
John D. Dunn Antiques Pty Ltd
John Furphy. Life member
Kazari Collector
Lafite Fine Silver
Lauraine Diggins Fine Art
Mary Titchener Antique Jewels
Moorabool Antique Galleries
Page Antiques
Pentimento Pty Ltd
Roy's Antiques Pty Ltd
Rutherford
Snook & Company Antique Dealers
Trinity Antiques
Valentine's Antique Gallery
Virtanen Antiques
Westbury Antiques
Woodshed Antiques

DIRECTORY OF AAADA APPROVED SERVICE PROVIDER MEMBERS

Click on this link aaada.org.au/services/ to access further details about the following approved services members including service categories, contact details, websites.

ANTIQUE JEWELLERY, GOLD & SILVER RESTORATION

Chilton's Antiques and Jewellery (NSW)
Palloys (NSW)
Paragon Restoration Pty Ltd (VIC)
W. J. Sanders & Company Pty Limited (NSW)

ART HANGING SERVICES

Hanging Around Art Hanging Service (NSW)

CARPET, RUG & TEXTILE CONSERVATION

Behruz Studio (VIC)
Nomadic Rug Traders (NSW)
Persian Carpet Repair and Restoration Co (NSW)
RugWash (QLD)
The Rug Experts (NSW)

CLOCK & WATCH RESTORATION

About Time for Clocks (NSW)

CUSTOMS AGENTS, FREIGHT FORWARDING, REMOVALISTS & PACKERS

Grace Fine Art (NSW)

FINE ARTS CONSERVATION & RESTORATION

David Stein and Co Pty Ltd (NSW)
International Conservation Services Pty Ltd (NSW)
Lauraine Diggins Fine Art (VIC)

FURNITURE RESTORATION & CONSERVATION

Ben Stoner Antiques Conservation and Restoration (NSW)
Courtois Antiques/ Restoration (NSW)
GN Olsson Mastercraftsmen gnosson.com Brisbane, Gold Coast and Sunshine Coast (QLD)
International Conservation Services Pty Ltd (NSW)
Patinations Conservation Services Pty Ltd (NSW)

GILDING, FRAMING & GILT RESTORATION

GN Olsson Mastercraftsmen gnosson.com Brisbane, Gold Coast and Sunshine Coast (QLD)
International Conservation Services Pty Ltd (NSW)

INSURANCE

Aon Risk Services Australia Limited (NATIONAL)

VALUERS & CONSULTANTS

Adam Galleries (VIC)
Antiquarian (VIC)
B.C. Galleries (VIC)
Barry R Garside (WA)
Behruz Studio (VIC)
ByJoel (VIC)
Chilton's Antiques & Jewellery (NSW)
Christopher Day Gallery (NSW)
Dillee Art Consultants (VIC)
Fritz Lintner Antiques (NSW)
Hind's Antiques (QLD)
Lauraine Diggins Fine Art (VIC)
Look Art Consulting (VIC)
McWilliam and Associates Pty Ltd (VIC)
McWilliam and Associates Pty Ltd (NSW)
Robert Williams Consultancy (NSW)
Sue Hewitt Fine Art Consultant (NSW)

DECORATIVE ARTS & COLLECTORS SOCIETIES

The Australiana Society Inc (NATIONAL)
The Ceramic Collectors Society (NSW)
The Furniture History Society (Australasia) Inc (NATIONAL)
The Silver Society of Australia Inc (NATIONAL)

VIEW PREVIOUS CATALOGUES:

<https://aaada.org.au/2020-spring-catalogue/>

<https://aaada.org.au/2020-melb-virtual-fair-catalogue/>



Buying with Confidence

ADDITIONAL INFORMATION:

- All prices quoted are \$AUD and include GST.
- Note no buyers premium.
- Purchases, plus cost of delivery are to be negotiated directly with the relevant dealer.
- Circa (c.): defined in this catalogue as approximately 10 years either side of the recorded date.
- Condition report - contact dealer and refer to the AAADA code of practice above.
- GST is not applicable to exported items but these items may be liable to import taxes in the country they are being imported to.
- The Australian country call code is +61

ART-DESIGN-LIVING
aaada.org.au